

COLIN COOKE



COLIN COOKE LTD

PO BOX 602, ALTRINCHAM, WA14 5UN

TELEPHONE: 0161 927 9524

website: www.colincooke.com email: coins@colincooke.com



JANUARY 2026



Managing Director – Lee Brownson

Callers by appointment only, as coins are not kept on the premises.

Hours of Business: Mon – Sat only. 8.00am. to 4.30pm. (Sat only to 12.00pm.)

Tel - 0161-927-9524

WhatsApp - 0161-927-9524

E-Mail - coins@colincooke.com

Address - COLIN COOKE LTD, PO BOX 602, ALTRINCHAM, WA14 5UN

LEE BROWNSON will attend to your Telephone/E-mail/Letter orders.

Replies can be addressed directly to any of us at the address given on the front cover.

Postage will be added to all orders.

Cheques - should be made payable to **Colin Cooke Ltd.**

Cards – All major Credit and Debit card's accepted.

Bank Transfer - Natwest, Underbank Hall Branch, Stockport

Colin Cooke Ltd, Account No: 54651239, Sort Code: 01-08-38

Email PDF Lists

We are now able to offer this list and all future lists by email in a PDF format.

If you would like to receive the PDF version in full colour, please send us an email so that we then have your email address on record and we can add you to the email mailing list for future lists.

VISIT OUR WEBSITE

At

www.colincooke.com

Our website has thousands more pictures for you to view and is an invaluable reference for any coin collector.

All coins can be viewed in full colour on our website.

HAMMERED GOLD

1. Charles I Unite. Tower Mint. Group B.
Second Bust. Class 1a. S2687. N2148.
mm Castle 1627-8. 8.92g.
EF, bold strike, slightly double struck.
Some very fine scratches above mark
of value. **(illustrated)** £3,950.00



2. Charles I Pattern Unite by A. Vanderdort in
Silver. 4.40g. Brookes 1240. N2655.
Cast as usual. GVF for issue.
(illustrated) £750.00



3. Charles I Gold Double-crown. Tower Mint.
Group E. Class II. Fifth bust, bust 9,
smaller 'Aberystwyth' bust. 4.68g.
Mm Triangle over Anchor, 1638-40.
S2705. N2173.
GVF for issue. **(illustrated)** £3,950.00



4. Netherlands Kampen Rose Noble, in style
of Edward IV. Fr. 151. Inverted C on
flag. 7.62g. Choice GEF and About As
Struck. £3,950.00

HAMMERED SILVER

5. James I Crown. Third Coinage, 1619-25.
S2665. Plume over Shield.
mm Lis 1623-4. King on horseback
with grass ground line.
Bold GVF, some parts better, small
flan crack from strike.
(illustrated) £4,250.00



6. Charles I Crown. Group III, third horseman,
type 3b. Tower Mint.
Mm Portcullis, 1633-4. 29.77g.
N2196. S2759. GF - Near VF
(illustrated) £1,750.00



HAMMERED SILVER (CONTINUED)

7. Charles I Crown. Group V,
(under Parliament), fifth horseman,
type 5, tall spirited horse.
Tower Mint under Parliament.
Mm Sun, 1645-6. 29.87g. N2199.
S2762. GF - Near VF
(illustrated) £2,000.00



8. Charles I TRURO Crown.
TRURO Mint, 1642-3. Mm Rose.
28.41g. S3045. N2533.
VF, some parts better
(illustrated) £2,750.00



9. 1644 Charles I EXETER Crown.
EXETER Mint, 1643-6. Mm Rose.
Date to left of Mm. 28.68g. S3058.
N2557. About VF £1,250.00
10. Charles I Halfcrown. Tower Mint.
Group II, second horseman. Type 2c.
Smaller horse, cross on housing,
plume on horse's head only.
Oval draped shield with CR at sides.
Mm Portcullis, 1633-4. 15.08g.
S2771. N2207. GF - Near VF £250.00
11. Charles I Halfcrown. Tower Mint.
Group II, second horseman. Type 2c.
Smaller horse, cross on housing,
plume on horse's head only.
Oval draped shield with CR at sides.
Mm Harp, 1632-3. 14.80g.
S2771. N2207.
VF/GVF, pleasing £525.00
12. Charles I Halfcrown. Tower Mint.
Group II, second horseman. Type 2c.
Smaller horse, cross on housing,
plume on horse's head only.
Oval draped shield with CR at sides.
Mm Portcullis, 1633-4. 14.57g.
S2771. N2207.
GVF better than usual £550.00
13. Charles I Halfcrown. Tower Mint.
Group III, third horseman. Type 3a1.
Scarf flying from King's waist.
Oval garnished shield.
Mm Crown, 1635-6. 14.28g. S2773.
N2209. GVF £450.00
14. Charles I Halfcrown.
Tower Mint Under Parliament.
Group III, third horseman. Type 3a3.
No Ground Below.
Oval garnished shield.
Mm Sun, 1645-6. 15.24g. S2778.
N2213. Near VF/VF, toned
Sold with old collectors ticket £395.00
15. Charles I Halfcrown. Tower Mint.
Group IV, fourth horseman. Type 4.
Foreshortened Horse.
Oval garnished shield.
Mm Triangle in circle, 1641-3. 13.22g.
S2779. Near VF, slightly short of flan.
£125.00

HAMMERED SILVER (CONTINUED)

16. Charles I York Halfcrown.

YORK Mint, 1643-4. Type 2.
Groundline with grass.
Oval garnished shield. Mm Lion.
13.78g. S2864. N2310.
Bold GVF, striking flaw to edge.
Overall an excellent example.
(illustrated) £2,750.00



17. Charles I York Halfcrown.

YORK Mint, 1643-4. Type 5.
Tall horse, mane in front of chest,
EBOR below.
Crowned square-topped shield
between CR, floral spray in legend.
Mm Lion. 14.86g. S2867. N2313.
VF, some parts better £1,450.00

18. 1643 Charles I Oxford Halfcrown.

OXFORD Mint, 1642-6.
Oxford horseman without
groundline, Oxford plume behind.
Reverse with declaration in two lines,
Three Oxford plumes above,
1643 below. Mm Plume/- . 14.94g.
S2954. N2413. Weak on King's
portrait otherwise Near Extremely
Fine and a pleasing example.
(illustrated) £3,750.00



19. Charles II Hammered Issue Halfcrown, 1660-2. First Issue.

Without inner circles or mark of
value. Mm Crown on obverse only.
S3307. N2759. Weight 14.94g.
Almost Extremely Fine, marvellous
blue toning with underlying mint
lustre. **(illustrated)** £7,950.00



20. Edward VI Shilling. 4.63g. S2466. N1917/1.

Second period, Jan. 1549- Apr. 1550.
Second Issue, debased. Bust 3.
1549 in Roman numerals.
mm Arrow (over G on reverse).
Some weakness in legend but overall
portrait GVF, very rare £850.00

21. Charles I Shilling. Tower Mint.

Group C, third bust, type 2a, with
more visible armour.
Mm Plume, 1630-1. 5.92g. N2221.
S2787. VF or better, bright. £750.00

22. Charles I Shilling. Tower Mint.

Group D, fourth bust, type 3.1, with
falling lace collar, inner circles.
Mm Harp, 1632-3. 6.01g. N2223.
S2789. GVF, a little weak on the
portrait. £350.00

23. Charles I Briot Shilling.

Nicholas Briot Coinage, 1631-9.
Second Milled Issue, 1638-9.
Mm Anchor. 5.99g. N2305. S2859.
GVF, some weight adjustment marks
£750.00

24. Charles I Aberystwyth Shilling.

ABERYSTWYTH Mint.
mm Book, 1638-42. 5.83g. S2883.
N2331. Large Plume and large XII.
VF, some striking flaws.
Bold for this very rare type. £1,850.00

HAMMERED SILVER (CONTINUED)

25. 1562 Elizabeth I 6d. Milled issue. Mm Star.
S2594. Tall narrow bust with plain
dress, large rose. GVF, toned
(**illustrated**) £695.00



26. 1564/2 Elizabeth I Sixpence.
Milled Coinage. Large broad bust.
mm Star. 2.87g. S2597. N2028.
Near VF, creased and straightened.
£295.00

27. 1646 Charles I Bridgenorth-On-Severn 6d.
Bridgenorth-On-Severn Mint.
Scroll above Declaration.
No Mm on Obverse. 2.74g. N2523.
S3041. VF, slight striking crack on
edge. £950.00

28. 1651 Pattern Commonwealth Sixpence by
Blondeau. mm Sun.
ESC 1498, R2. Bull 217.
GVF, toned (**illustrated**) £2,250.00



29. Henry VI, First Reign, 1422-61 Groat.
Annulet issue, 1422-c.1430.
Calais Mint. Annulets at neck.
S1836. N1427. 3.77gm.
mm Incurved pierced cross both
sides (1422-7). VF or better £275.00

30. Mary, 1553-54 Groat. Crowned bust.
Tower Mint. mm Pomegranate.
S2492. N1960.
Bold GVF - Near EF £650.00

31. 1645 Charles I Oxford Groat.
OXFORD Mint, 1642-6.
Single plume, 2 scrolls and OX
monogram over Declaration. No Mm.
1.93g. S2988. N2466.
VF for issue, reverse better.
Attractively toned.
(**illustrated**) £1,750.00



32. 1644 Charles I Exeter Groat.
EXETER Mint, 1643-6. Mm Rose.
1.68g. S3088. N3579.
EF attractively toned, as struck and
superb. Slightly irregular flan with
striking crack. (**illustrated**) £1,500.00



33. Charles II Groat.
Third Hammered Issue, 1660-2.
Mm Crown. 2.05g. S3324. N2768.
About EF, pleasing £350.00

34. Charles I York Threepence.
YORK Mint, 1643-4. Mm Lion.
EBOR above square-topped shield
over cross fleury. 1.29g. N2323.
S2877. Bold GVF or better, slightly
wavy flan with cut to top.
Ex Lingford Collection, ticket
Bought July 1949.
(**illustrated**) £450.00



CROWNS

35. 1658/7 Oliver Cromwell Crown.
S3226, ESC 10, Bull 240.
Near VF (**illustrated**) £3,250.00



36. 1662 First Bust, Rose Below.
Edge Undated. Reverse Inverted.
S3350. Fine, toned £225.00
37. 1662 First Bust, legend re-arranged no
Rose Below. Edge Undated.
Reverse Inverted. S3353.
Near Very Fine for issue.
(**illustrated**) £750.00



38. 1663 First Bust. No stops on Reverse.
S3354. ANNO REGNI XV.
Bold GF - Near VF
(**illustrated**) £550.00



39. 1664 Second Bust. Edge XVI. S3355.
Bull 362, ESC 28. Fine £250.00
40. 1671 Charles II. 2nd Bust. V. TERTIO.
S3357. ESC 42. Bull 382.
Fine £175.00
41. 1673 Charles II. Third dr. bust. V.QVINTO.
S3358. GF £195.00
42. 1673/2 Charles II. Third dr. bust.
V.QVINTO. S3358. Fine £200.00
43. 1676 Charles II Crown. Third dr. bust.
V. OCTAVO. Bull 397. ESC 51. S3358.
Fine at most £150.00
44. 1676 Charles II Crown. Third dr. bust.
V. OCTAVO. Bull 397. ESC 51. S3358.
Near VF for issue
(**illustrated**) £450.00



CROWNS (CONTINUED)

45. 1678/7 Charles II Crown. Third dr. bust.
TRICESIMO. S3358.
Near VF, toned (**illustrated**) £850.00



46. 1679 Charles II Crown. T. PRIMO.
Third dr. bust. Ten harp strings.
S3358. ESC 56. Bull 403.
Near EF, toned.
Ex Spink Numismatic Circular Feb
1898 (P2606, no 43238), described
'a choice specimen FDC -£1-15.0'
(**illustrated**) £3,250.00



47. 1679 Charles II Crown. T. PRIMO.
Fourth dr. bust. S3359.
Bold GF - Near VF, some marks on
obverse. (**illustrated**) £495.00



48. 1680 Charles II Crown. T. SECVNDO.
Fourth dr. bust. S3359. GF £275.00
49. 1696 William III Crown. First dr. bust, with
curved breast plate or drapery.
OCTAVO. S3470. GF £120.00
50. 1706 Queen Anne Crown. Roses & Plumes.
QVINTO. S3578.
Fine, ex mount, rare £250.00
51. 1716 Scotland James VIII Silver Pattern
Restrike Crown dated 1716 (struck
1828 by Matthew Young).
Laureate and draped bust right.
Reverse Crowned square-topped and
quartered shield of arms, 5h. S5731.
Encapsulated and graded by NGC as
MS64 (8296585-002) (**illustrated**)
£6,950.00



CROWNS (CONTINUED)

52. 1804 Bank of England Dollar.
With Stop After REX. S3768.
GEF, toned (**illustrated**) £550.00

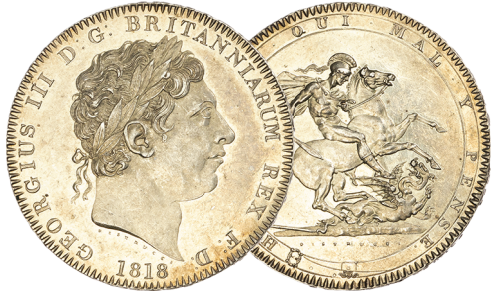


53. 1818 LIX. S3787. Almost Uncirculated,
toned. (**illustrated**) £1,250.00



54. 1818 LIX. TUTAMEN error - A is unbarred.
S3787. GF, extremely rare £150.00
55. 1818 LVIII. George III. Laur. head. S3787.
GEF attractively toned, two digs to
right of bust and one or two marks
on the reverse. £450.00

56. 1818 LVIII. George III. Laur. head. S3787.
Choice Virtually BU, light golden tone
(**illustrated**) £1,450.00



57. 1819 LX. S3787. EF, some minor marks
(**illustrated**) £450.00



58. 1819 LX. No stop after TUTAMEN. S3787.
GF - Near VF £125.00
59. 1819 LIX. S3787. ESC 2010 (215).
Choice Almost Unc, delightfully
toned. (**illustrated**) £1,250.00



60. 1819 LIX. No Stops on Edge. S3787.
ESC 215A (R3). GEF, cleaned and
extremely rare £395.00

CROWNS (CONTINUED)

61. 1819 LIX. Thick Ruled Garter. S3787.
GEF, light golden tone, some light
marks. **(illustrated)** £650.00



62. 1819 LIX. Thick Ruled Garter. S3787.
GEF, toned, some light marks.
(illustrated) £650.00



63. 1819/8 LIX. ESC 2012, S3787.
Near VF £150.00
64. 1820 LX. S3787. ESC 216. Bull 2013.
EF, toned. £450.00
65. 1820 LX. S3787. ESC 216. Bull 2013.
EF, toned. **(illustrated)** £450.00



66. 1820 LX. S3787. S over T in SOIT.
GF £125.00
67. 1820/19 LX. S3787. ESC 220A (R3).
Bull 2018. Almost Uncirculated, a
couple of marks in fields, extremely
rare **(illustrated)** £1,250.00



68. 1821 George IV. Secundo. Laur. head.
S3805. ESC 2310 (246).
EF, toned **(illustrated)** £550.00



69. 1821 George IV. Secundo.
WWP Inverted Under Lance. S3805.
GVF, rare £325.00
70. 1822 Secundo. S3805. Near EF
(illustrated) £450.00



CROWNS (CONTINUED)

71. 1822 Tertio. S3805.
Bold GVF, toned. £295.00
72. 1826 George IV Proof Crown.
SEPTIMO edge.
(L&S 28, ESC 2336 (257), S3806).
As Struck, delightfully toned, some
minor hairlines.
Very conservatively graded by NGC as
PF61 (8537188-001)
(**illustrated**) £9,750.00



73. 1844 Star Stops. VIII. S3882.
Near EF (**illustrated**) £395.00



74. 1844 Cinquefoil Stops. VIII. S3882. ESC 281.
Extremely Fine, toned.
(**illustrated**) £595.00



75. 1845 Cinquefoil Stops. VIII. S3882,
ESC 282, Bull 2564.
EF, cleaned. £195.00
76. 1847 Young Head. XI Cinquefoil stops.
S3882. ESC 2567 (286).
Near EF (**illustrated**) £450.00



77. 1887 JH. S3921. Virtually BU, fields
Prooflike (**illustrated**) £250.00

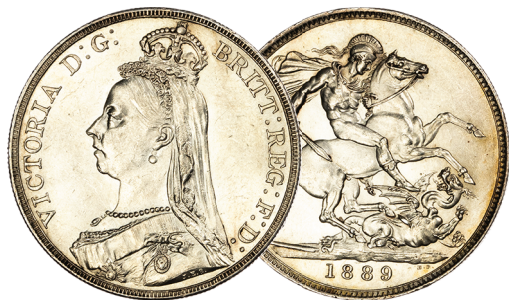


CROWNS (CONTINUED)

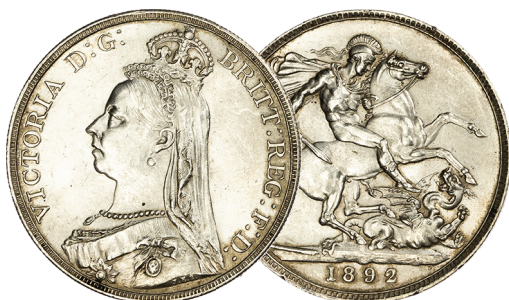
78. 1888 Narrow Date. S3921. A/Unc, lightly brushed in fields. £150.00
79. 1888 Wide Date. S3921. Bull 2588. Choice Almost BU, cleaned/hairlines in fields. Extremely rare in any grade and by far the strongest example we have had. **(illustrated)** £750.00



80. 1889 Jubilee bust. S3921. Choice Virtually BU **(illus)** £295.00



81. 1890 S3921. GEF, toned. £150.00
82. 1891 S3921. Choice A/Unc, lustrous £295.00
83. 1892 S3921. Almost BU **(illus)** £450.00



84. 1893 LVII. S3937. EF, minor bruise, rarer edge year £295.00
85. 1893 LVI. S3937. GEF, toned, some minor marks. £250.00
86. 1893 LVI. S3937. GEF £250.00
87. 1893 Proof. LVI. Davies 108, S3937, KM 783, ESC 304, Bull 2594. Brilliant As Struck, handling marks in the fields. **(illustrated)** £995.00



88. 1894 LVIII. S3937. Almost Uncirculated, lustrous. **(illustrated)** £425.00



89. 1894 LVII. S3937. GEF, toned. £325.00
90. 1895 LIX. S3937. Choice Almost BU **(illustrated)** £495.00



CROWNS (CONTINUED)

91. 1895 LVIII. S3937. Choice Almost BU
(illustrated) £495.00



92. 1896 LX. S3937. Virtually BU, lightly
toned. (illustrated) £550.00



93. 1896 LIX. S3937. EF £325.00

94. 1897 LXI. S3937. A/Unc, lustrous
(illustrated) £375.00



95. 1897 LX. S3937. A/Unc lustrous, light
steely tone. (illustrated) £375.00



96. 1898 LXII. S3937. Almost Unc, lustrous,
some minor marks
(illustrated) £450.00



97. 1898 LXI. S3937. GEF, lustrous, some
minor marks £350.00

98. 1899 LXIII. S3937. Almost Unc
(illustrated) £395.00



99. 1899 LXII. S3937. EF, light golden
tone £250.00

100. 1900 LXIV. S3937. Near EF/EF £175.00

101. 1900 LXIII. S3937. GEF £250.00

CROWNS (CONTINUED)

102. 1902 S3978. ESC 3560 (361).
Almost BU (**illustrated**) £375.00



103. 1902 Matt Proof Crown.
S3979. ESC 3562 (362).
About As Struck (**illustrated**) £295.00



104. 1927 Proof Wreath Crown. S4036.
As Struck, some light hairlines on
obverse. £295.00

105. 1927 Proof Wreath Crown. S4036.
As Struck (**illustrated**) £350.00



106. 1928 Wreath. S4036. GVF £150.00

107. 1928 Wreath. S4036. Choice Almost BU,
light golden tone.
(**illustrated**) £450.00



108. 1929 Wreath. S4036. Near EF £250.00

109. 1929 Wreath. S4036. EF £295.00

110. 1930 Wreath. S4036. GEF £375.00

111. 1930 Wreath. S4036.
Choice Almost BU
(**illustrated**) £475.00



112. 1931 Wreath. S4036. EF £325.00

113. 1931 Wreath. S4036. GEF or better
(**illustrated**) £395.00



CROWNS (CONTINUED)

114. 1932 Wreath. S4036. EF

(illustrated)

£495.00



115. 1932 Wreath. S4036. GEF

(illustrated)

£595.00



116. 1933 Wreath. S4036. Near EF, dark tone.

£275.00

117. 1933 Wreath. S4036. EF

£325.00

118. 1934 George V Wreath Crown. Key Date. S4036. ESC 3647 (374). Bull 3647.

Near EF/EF **(illustrated)** £2,750.00

119. 1934 George V Wreath Crown. Key Date. S4036. ESC 3647 (374). Bull 3647.

About Uncirculated, underlying mint brilliance with a light golden tone.

(illustrated)

£3,750.00



120. 1935 Specimen Issue.

St. George, incuse lettering on edge.

S4049. Practically As Struck £125.00

121. 1936 Wreath. S4036. 'Gilt'.

GEF, has been superbly gilded to give the impression of a crown struck in gold.

An extremely interesting curiosity of this rare date. £350.00

122. 1936 Wreath. S4036.

Choice Almost BU, rare

(illustrated)

£650.00



CROWNS (CONTINUED)

123. 1937 Proof. S4079.
As Struck, brilliant. £95.00
124. 1937 Proof. S4079. As Struck, toned. £95.00
125. 1951 Festival of Britain Crown. Bare head.
George and dragon, date in exergue.
Proof-like. Virtually BU in original
purple box, slight old sticker mark on
box. £18.00
126. 1953 S4136. BU £8.00
127. 1953 Proof. S4136. Practically FDC £80.00
128. 1953 Proof. S4136. Practically FDC £80.00
129. 1953 Proof. S4136. As Struck £80.00
130. 1960 Polished Die
(New York Exhibition issue). S4143.
As Struck £50.00
131. 1965 BU £2.50
132. 1972 BU £1.50
133. 1977 BU £1.50
134. 1980 BU £2.00
135. 1981 BU £2.00

HALFCROWNS

136. 1658 Oliver Cromwell Halfcrown.
HIB type. S3227A. ESC 447. Bull 252.
VF – GVF (**illustrated**) £2,750.00



137. 1658 Oliver Cromwell Halfcrown.
HIB type. S3227A. ESC 447. Bull 252.
GVF/Near EF, toned
(**illustrated**) £3,800.00



138. 1669/4 3rd Bust. V. PRIMO. ESC 466 R3.
S3365. GF, slightly porous surface,
extremely rare (**illustrated**) £375.00



139. 1671 3rd Bust. V. TERTIO. S3366. ESC 468.
Near VF, toned (**illustrated**) £475.00



140. 1672 3rd Bust. V. QVARTO. S3366.
ESC 471 (R). GF £195.00
141. 1677 Charles II. 4th Bust. V. NONO.
S3367. ESC 479. GF £175.00

HALFCROWNS (CONTINUED)

142. 1686 James II Halfcrown. SECVNDO edge.
First laur and dr. bust.
S3408. Bull 749. ESC 494.
GEF, lightly toned. Hair detail better
than usual. **(illustrated)** £4,750.00



143. 1687/6 James II. 1st Bust. TERTIO. S3408.
Plain in angles. Overdate clear.
Fine, rare £250.00
144. 1689 1st Bust. 1st Shield. PRIMO.
No frosting, with pearls. S3435.
Near EF, attractively toned. £1,350.00
145. 1690 1st Bust. 2nd Shield. SECVNDO.
GRETIA error. Second V struck over S.
S3435. ESC 514. R3.
Bold Fine or better.
(illustrated) £550.00



146. 1697 1st Bust. Large Shields, ordinary harp.
NONO. S3487. ESC 541.
Plain in angles. GVF or better.
(illustrated) £395.00



147. 1698 1st Bust. Modified Large Shields.
DECIMO. S3494. ESC 554.
GVF, some marks £275.00
148. 1700 William III. 1st Bust.
Modified Large Shields. D. TERTIO.
S3494. ESC 562. GEF, lustrous
(illustrated) £950.00



149. 1701 William III. 1st Bust. Angles plain.
Modified Large Shields. D. TERTIO.
S3494. ESC 554. Bull 1046.
Bold GVF, some parts better
(illustrated) £650.00



HALFCROWNS (CONTINUED)

150. 1706 Queen Anne. Roses & Plumes in angles. QVINTO. S3582. ESC 572. Bull 1361. Fine/Near VF £275.00
151. 1707 Queen Anne. Plain in angles. SEPTIMO. Post Union. S3604, Bull 1366, ESC 574. GVF (illustrated) £495.00



152. 1713 Plain in angles. DVODECIMO. S3604. ESC 583. GVF, slight weight reduction on obverse. (illustrated) £550.00



153. 1714/3 Roses & Plumes in angles. D.TERTIO. S3607. Very Fine (illustrated) £450.00



154. 1717 George I. Roses & Plumes in angles. TIRTIO. S3642. ESC 1554. Bull 589. Near EF/EF, attractively toned. (illustrated) £2,250.00



155. 1723 George I. SSC in angles. DECIMO. ESC 1557 (592). S3643. 7 strings to harp. GEF, attractively toned. (illustrated) £3,950.00



156. 1731 George II. Roses & Plumes in angles. QVINTO. S3692. ESC 595. VF, toned, much rarer date. (illustrated) £475.00



HALFCROWNS (CONTINUED)

157. 1732 Roses & Plumes in angles. SEXTO.
S3692. ESC 596. GVF, rare
(illustrated) £750.00



158. 1739 George II. Roses in angles.
D.VODECIMO. S3693. ESC 600.
Bull 1679. Near VF
(illustrated) £350.00



159. 1741 George II. Roses in angles.
D.QVARTO. S3693. ESC 601 (R3).
Bull 1681. GVF, some marks in
obverse field. (illustrated) £750.00



160. 1741/39 George II. Roses in angles.
D.QVARTO. S3693.
Extremely Fine, attractively toned.
(illustrated) £1,750.00



161. 1743 Roses in angles. D.SEPTIMO.
S3694, ESC 603A, Bull 1684.
Bold GF £195.00
162. 1745 George II. LIMA below bust. D.NONO.
S3695. ESC 605.
GVF or better, toned
(illustrated) £550.00



163. 1746 George II. LIMA below bust. D.NONO.
S3695A. ESC 606.
GF, the reverse better than VF.
£250.00
164. 1746 LIMA below bust. D.NONO.
S3695A, ESC 606, Bull 1688.
Choice EF, attractively toned and
pleasing. £950.00

HALFCROWNS (CONTINUED)

165. 1746/5 LIMA below bust. D.NONO. S3695A.
Near Extremely Fine, attractively
toned. **(illustrated)** £850.00



166. 1750 George II. Plain in angles. V.QVARTO.
S3696, Bull 1692, ESC 609.
Fine - GF, toned £195.00
167. 1816 George III. S3788. ESC 613. Bull 2086.
Almost BU, darkly toned.
(illustrated) £575.00



168. 1817 George III. Small Head. S3789.
ESC 618. GEF, toned
(illustrated) £375.00



169. 1817 George III. Large Head. S3788.
ESC 616. GEF £395.00
170. 1817 George III. Large Head. S3788.
ESC 616. Almost BU
(illustrated) £550.00



171. 1817 George III. Large Head. S3788.
ESC 616. Choice Virtually Mint State,
some golden hints on obverse.
£650.00
172. 1817 Large Head. S/I in PENSE. S3788.
Choice Almost BU and extremely
rare. **(illustrated)** £950.00



173. 1818 George III. S3789. ESC 621.
GEF **(illustrated)** £395.00



174. 1819 George III. S3789. ESC 623.
EF, cleaned £150.00

HALFCROWNS (CONTINUED)

175. 1819 George III. S3789. ESC 623.
EF, cleaned £150.00
176. 1819/8 George III. S3789. Bull 2103.
Fine, a little porous. Very rare £95.00
177. 1820 George III. S3789. ESC 625.
EF (**illustrated**) £375.00



178. 1820 George III. S3807. ESC 628.
Choice Virtually BU, light mauve
tone. (**illustrated**) £650.00



179. 1821 George III Proof Halfcrown.
Laureate Head with heavier
garnishing on reverse.
S3807. Bull 2361 R2, ESC 632.
Davies 172P.
Superb As Struck, minor hairlines
only.
Previously graded by CGS as Proof
AU78. (**illustrated**) £3,250.00



180. 1821 Laur Head. Lightly garnished Shield.
S3807. GEF, brushed/cleaned.
£150.00
181. 1821 Laur Head. Lightly garnished Shield.
S3807. Almost Uncirculated, lustrous
£650.00
182. 1823 Laur Head. 1st Reverse.
Heavier Garnishing. S3807.
ESC 633 R3. Bull 2364.
Bold GVF to Near Extremely Fine,
some marks. Extremely rare and one
of the better examples available for
commerce. (**illustrated**) £5,500.00



HALFCROWNS (CONTINUED)

- | | | | |
|------|------|---|---------|
| 183. | 1825 | George IV. Bare Head. S3809.
ESC 642. GEF, prooflike
(illustrated) | £395.00 |
|------|------|---|---------|



- | | | |
|------|---|---------|
| 184. | 1825 George IV. Bare Head. S3809.
ESC 642. Virtually BU
(illustrated) | £650.00 |
|------|---|---------|



185. 1826 George IV. Bare Head. S3809.
ESC 646. GVF/Near EF £250.00

186. 1826 George IV Bare Head Proof Halfcrown
S3809. ESC 647. Bull 2376.
As Struck, minutest of hairlines.
(illustrated) £2,500.00



187. 1828 George IV. Bare Head. S3809.
ESC 648. Almost BU, at some point
wiped. (**illustrated**) £350.00



188. 1829 Bare Head. George IV. S3809.
ESC 649. EF, light golden tone.
(illustrated) £350.00



189. 1831 William IV Plain Edge Proof.
S3834A. ESC 657 'R'. Bull 2473.
WW in Block. As Struck, lightly toned.
Encapsulated by PCGS as PF62 but
incorrectly labelled as WW in Script
on slab (206027.62/56570282)
(illustrated) £2,750.00



HALFCROWNS (CONTINUED)

190. 1834 WW in script. S3834. ESC 662.
Bull 2478. GF £50.00
191. 1834 WW in script. S3834. ESC 662.
Bull 2478. Near EF, cleaned £150.00
192. 1834 William IV. WW in script. S3834.
ESC 662. Bull 2478. Almost BU,
light tone, light flaw on truncation.
£695.00
193. 1834 William IV. WW in block capitals.
S3834A. ESC 660 (R).
Near VF £150.00
194. 1835 William IV. S3834. ESC 665 (R).
Almost BU, toned
(illustrated) £995.00



195. 1836 William IV. S3834. ESC 666.
GEF (illustrated) £475.00



196. 1836/5 William IV. S3834. ESC 666A (R3).
GVF, very rare £175.00

197. 1837 William IV. S3834. ESC 667.
About EF (illustrated) £350.00



198. 1840 S3887. Choice Virtually Mint State
(illustrated) £1,750.00



199. 1842 S3888. ESC 675. Bull 2717.
Almost Uncirculated, cleaned.
(illustrated) £350.00



HALFCROWNS (CONTINUED)

200. 1843 S3888. Choice GEF, cleaned in the past, rare (**illustrated**) £850.00



201. 1844 S3888. EF, lightly brushed. £250.00

202. 1845 S3888. GEF, cleaned and scratched. £200.00

203. 1845 S3888. Choice Almost BU, light golden tone. (**illustrated**) £1,250.00



204. 1845/3 S3888. GEF, cleaned. (**illustrated**) £450.00



205. 1846 S3888. EF, cleaned in the past £200.00

206. 1846 S3888. Near EF (**illustrated**) £350.00



207. 1848 S3888. ESC 681 (R3). GF, very rare £250.00

208. 1848/6 S3888. VF, very rare (**illustrated**) £450.00



209. 1849 Large Date. S3888. Choice Almost BU (**illustrated**) £1,500.00



HALFCROWNS (CONTINUED)

210. 1849 Small Date. S3888. ESC 683 (R).
Near EF, rare (**illustrated**) £750.00



211. 1850 S3888. ESC 684, Bull 2733.
GEF (**illustrated**) £995.00



212. 1874 S3889. Almost BU, light mauve
toning. (**illustrated**) £550.00



213. 1875 S3889. GEF (**illustrated**) £350.00



214. 1876 S3889. Near EF, cleaned £80.00

215. 1876/6 Victoria Halfcrown. S3889.
Choice Almost Uncirculated lustrous.
Conservatively graded and
encapsulated by NGC as AU58
(2868241-001)
6 over 6 is quite clear and this noted
on NGC label. (**illustrated**) £425.00



216. 1877 S3889. Near EF, cleaned £95.00
217. 1878 S3889. GEF, cleaned £125.00
218. 1879 S3889. GVF, light golden tone £125.00
219. 1880 S3889. Near EF £250.00
220. 1880 S3889. GEF, light golden tone.
(**illustrated**) £350.00



HALFCROWNS (CONTINUED)

221. 1880 S3889. Choice Virtually Mint State, couple of nicks on edge. £550.00
 222. 1881 S3889. GEF, cleaned £125.00
 223. 1881 S3889. GEF, some marks, the reverse choice £350.00
 224. 1882 Key Date. S3889. GEF, bright £250.00
 225. 1883 S3889. GEF, light golden tone £300.00
 226. 1883 S3889. Choice Almost BU £450.00
 227. 1884 S3889. Choice Virtually BU (illustrated) £550.00



228. 1885 S3889. EF, a couple of minor marks £250.00
 229. 1885 S3889. EF £275.00
 230. 1885 S3889. Almost BU, lustrous light golden tone. Surface marks visible under close inspection. £450.00
 231. 1885 Victoria. S3889. Choice Almost Mint State, light golden tone with underlying brilliance. £550.00
 232. 1886 S3889. Almost Uncirculated lustre (illustrated) £425.00



233. 1887 JH. S3924. Almost BU, toned £75.00
 234. 1887 YH. S3889. GEF, some marks £295.00
 235. 1889 S3924. Fine £20.00
 236. 1890 S3924. Virtually BU £225.00

237. 1891 S3924. Virtually BU £295.00
 238. 1892 S3924. Virtually BU £250.00
 239. 1893 S3938. Almost BU £150.00
 240. 1893 Proof Victoria Halfcrown. S3938. ESC 727.
 As Struck, attractively toned, some scratches on obverse. (illustrated) £450.00



241. 1894 S3938. Virtually BU, couple of toning spots £295.00
 242. 1894 S3938. Virtually BU £350.00
 243. 1895 S3938. Almost BU £225.00
 244. 1896 S3938. Virtually BU £250.00
 245. 1897 S3938. Choice Virtually BU £195.00
 246. 1897 S3938. Choice Virtually Mint State, fields prooflike, delightful gold mauve toning. £225.00
 247. 1898 S3938. Almost BU, light gold tone £225.00
 248. 1899 S3938. Almost BU £175.00
 249. 1899 S3938. Choice Virtually Mint State £250.00
 250. 1900 S3938. Virtually BU £175.00
 251. 1900 S3938. Virtually BU, exquisite blue/gold toning on obverse. £175.00
 252. 1900 S3938. Virtually BU £175.00
 253. 1901 S3938. About Unc, toned. £145.00
 254. 1901 S3938. Almost BU, delightfully toned. £150.00
 255. 1901 S3938. Choice Virtually BU, attractive tone. £195.00
 256. 1901 S3938. Choice Virtually BU £195.00
 257. 1902 Edward VII. S3980. Choice Practically Mint State £250.00
 258. 1902 Edward VII Matt Proof. S3980. Practically As Struck £225.00

HALFCROWNS (CONTINUED)

259. 1902 Edward VII Matt Proof. S3980.
As Struck, light hairlines on
obverse. £225.00
260. 1903 Edward VII. S3980.
GEF/Almost BU, pleasing
(illustrated) £2,250.00



261. 1904 Edward VII. S3980.
GEF, attractively toned.
(illustrated) £1,000.00



262. 1905 Key Date Edward VII.
S3980. ESC 750 R2. Bull 3571.
GEF-Unc, pleasing.
Slightly rubbed on obverse.
(illustrated) £3,750.00



263. 1906 Edward VII. S3980.
Choice Practically Mint State,
delightful mauve toning. £695.00
264. 1906 Edward VII. S3980.
Choice Virtually Mint State, brilliant.
(illustrated) £695.00



265. 1907 Edward VII. S3980.
Choice Almost Uncirculated, toned.
£550.00
266. 1907 Edward VII. S3980.
Virtually BU £550.00
267. 1907 Edward VII. S3980.
Choice Practically Mint State,
brilliant. (illustrated) £575.00



268. 1908 Edward VII. S3980.
GEF/Almost BU (illustrated) £475.00



HALFCROWNS (CONTINUED)

269. 1909 Edward VII. S3980.
Choice Almost Uncirculated £550.00
270. 1909 Edward VII. S3980.
Choice Virtually Mint State, exquisite
light mauve toning.
(illustrated) £650.00



271. 1910 Edward VII. S3980.
EF, lustrous £225.00
272. 1910 Edward VII. S3980.
Almost BU (illustrated) £375.00



273. 1910 Edward VII. S3980.
Virtually BU, attractively toned. £450.00
274. 1910 Edward VII. S3980.
Virtually BU £450.00
275. 1911 George V. S4011.
Virtually BU, choice £250.00
276. 1911 George V Proof Halfcrown. S4011.
Brilliant As Struck, minor hairlines
only £300.00
277. 1912 George V. S4011. Almost BU £250.00
278. 1913 George V. S4011. Virtually BU £325.00
279. 1914 George V. S4011.
Virtually BU, lightly toned. £150.00

280. 1915 George V. S4011. Virtually BU £125.00
281. 1915 George V. S4011.
Choice Mint State £145.00
282. 1916 George V. S4011. Almost BU £110.00
283. 1916 George V. S4011.
Choice Mint State £145.00
284. 1917 George V. S4011.
GEF/Almost BU £75.00
285. 1917 George V. S4011. Almost BU £90.00
286. 1917 George V. S4011.
BU, couple of minor marks £150.00
287. 1919 George V. S4011.
Choice Virtually BU £150.00
288. 1921 George V. S4021A.
Choice Practically Mint State
(illustrated) £175.00



289. 1922 George V. S4021A.
Almost BU £150.00
290. 1923 George V. S4021A. Almost BU £75.00
291. 1924 George V. S4021A. EF/GEF £95.00
292. 1925 George V. S4021A.
About Uncirculated, pleasing.
(illustrated) £595.00



293. 1926 OE. George V. S4021A.
Virtually BU £175.00
294. 1926 ME. George V. S4032.
Choice Practically Mint State £195.00

HALFCROWNS (CONTINUED)

295. 1927 George V. S4032. Virtually BU £95.00
 296. 1927 George V Proof Halfcrown. S4037.
 As Struck (**illustrated**) £150.00



297. 1928 George V. S4037. BU £50.00
 298. 1929 George V. S4037. BU £50.00
 299. 1930 George V. S4037. Virtually BU
 (**illustrated**) £795.00



300. 1931 George V. S4037. Virtually BU £60.00
 301. 1933 George V. S4037.
 Choice Virtually BU £70.00
 302. 1935 S4037. Almost BU £30.00
 303. 1935 George V. S4037. BU £45.00
 304. 1937 George VI Proof. S4080.
 FDC £45.00
 305. 1944 George VI. S4080. BU £25.00
 306. 1948 S4101. Almost BU £6.00
 307. 1949 S4106. GEF £8.00
 308. 1950 GEF £8.00
 309. 1962 Elizabeth II. S4145. BU £10.00
 310. 1965 Almost BU £3.50
 311. 1965 Elizabeth II. S4145. BU £5.00
 312. 1967 Elizabeth II. S4145. BU £3.00

BANK TOKENS**THREE SHILLINGS**

313. 1813 George III Three Shillings Bank Token.
 Laureate Head. Almost BU
 (**illustrated**) £250.00



314. 1814 George III Three Shillings Bank Token.
 Laureate Head. S3770.
 Almost BU (**illustrated**) £250.00

**EIGHTEENPENCE**

315. 1811 George III Eighteenpence (1s 6d).
 Draped and Laureate Bust in armour.
 S3771. EF, light hairlines £55.00
 316. 1812 George III Eighteenpence (1s 6d).
 Draped and Laureate Bust in armour.
 S3771. Near EF, toned £70.00
 317. 1812 George III Eighteenpence (1s 6d).
 Laureate head. S3772.
 EF or better, toned. (**illus**) £95.00



BANK TOKENS - EIGHTEENPENCE (CONTINUED)

318. 1813 George III Eighteenpence (1s 6d).
Laureate head. S3772.
GVF or better £50.00
319. 1814 George III Eighteenpence (1s 6d).
Laureate head. S3772. EF
(illustrated) £110.00



320. 1815 George III Eighteenpence (1s 6d).
Laureate head. S3772.
Near EF, dark tone. £70.00
321. 1816 George III Eighteenpence (1s 6d).
Laureate head. S3772.
Near EF, toned £70.00

FLORINS

322. 1849 Godless. S3890. WW behind bust
within linear circle.
GEF, light golden tone. (illus) £650.00



323. 1849 Godless. WW Obliterated.
ESC 802A. S3890.
Near EF, some marks. (illus) £350.00



324. 1849 Godless. WW Obliterated.
ESC 802A. S3890. Choice Virtually BU,
fields prooflike, some minor surface
marks. (illustrated) £1,250.00



325. 1852 Gothic Florin. S3891. ESC 806.
GVF £125.00
326. 1852 Gothic Florin. S3891. ESC 806.
Choice Virtually BU, light mauve
toning. £750.00
327. 1852/1 Gothic Florin. S3891. mdccclii, ii/i.
Choice GEF or better, delightfully
toned. (illustrated) £550.00



328. 1853 Gothic Florin. S3891. ESC 2826 (808)
with No Stop After Date.
Near EF, toned £250.00
329. 1854 Key Date Gothic Florin. S3891.
Fine, mark in field.
(illustrated) £850.00



330. 1855 Gothic Florin. S3891. GVF £95.00

FLORINS (CONTINUED)

331. 1856 Gothic Florin. S3891.
EF, reverse better (**illus**) £375.00



332. 1857 Gothic Florin. S3891.
GEF, lightly brushed £175.00

333. 1858 Gothic Florin. S3891.
GF-Near VF £45.00

334. 1859 Gothic Florin. S3891. EF
(**illustrated**) £300.00



335. 1860 Gothic Florin. S3891. Near EF £250.00

336. 1864 Gothic Florin. S3892. Die Number 60.
GEF (**illustrated**) £400.00



337. 1865 Gothic Florin. S3892. Die Number 30.
Near EF, minor marks
(**illustrated**) £300.00



338. 1866 Gothic Florin. S3892. Die Number 30.
Almost Uncirculated
(**illustrated**) £550.00



339. 1867 Gothic Florin. S3892. Die Number 5.
About Uncirculated, light golden
tone on obverse.
(**illustrated**) £595.00



340. 1868 Gothic Florin. S3893. Die Number 20.
Near VF £75.00

FLORINS (CONTINUED)

341. 1869 Gothic Florin. S3893. Die Number 11.
EF, some minor marks, bright.
(illustrated) £350.00



342. 1870 Gothic Florin. S3893. Die Number 8.
GVF or better. £150.00

343. 1871 Gothic Florin. S3893. Die Number 8.
EF, some minor marks
(illustrated) £300.00



344. 1872 Gothic Florin. S3893. Die Number 97.
EF, some scratches on obverse.
£180.00

345. 1873 Gothic Florin. S3893.
Die Number 198.
Near EF, some marks. £250.00

346. 1874 Gothic Florin. S3893. Die Number 14
(Die Number Double Struck).
Near EF, light golden tone.
(illustrated) £250.00



347. 1874/3 Gothic Florin. mdccclxxiv iv/iii.
Overdate clear. ESC 843a R2. S3893.
Die Number 29.
Almost BU, bright.
(illustrated) £450.00



348. 1875 Gothic Florin. S3893. Die Number 84.
Almost Uncirculated
(illustrated) £550.00



349. 1876 Gothic Florin. S3893. Die Number 14.
GVF, bright, scratch on obverse.
£95.00

350. 1877 Gothic Florin. S3895. Die Number 27.
42 Arcs. GEF (illustrated) £350.00



FLORINS (CONTINUED)

351. 1878 Gothic Florin. S3895. Die Number 35.
42 Arcs. EF **(illustrated)** £300.00



352. 1879 Gothic Florin. S3897. 48 Arcs.
No Die Number. With WW.
GEF or better, some marks
(illustrated) £350.00



353. 1879 Gothic Florin. S3898. 38 Arcs.
No Die Number. No WW.
GEF, rare. **(illustrated)** £350.00



354. 1880 Gothic Florin. S3900. GEF
(illustrated) £450.00



355. 1881 Gothic Florin. S3900.
Choice Almost BU, prooflike
(illustrated) £625.00



356. 1881 Gothic Florin. S3900.
Virtually BU, couple of minor marks.
(illustrated) £645.00



357. 1883 Gothic Florin. S3900.
EF, lightly brushed. £150.00

FLORINS (CONTINUED)

358. 1884 Gothic Florin. S3900.
Almost BU, attractively toned.
(illustrated) £625.00



359. 1885 Gothic Florin. S3900.
About EF, small dig on obverse field.
£195.00
360. 1886 Gothic Florin. S3900. EF £250.00
361. 1887 JH. S3925. Choice Virtually BU,
fields prooflike £75.00
362. 1887 Gothic. Florin. S3900.
About Uncirculated, lustrous with
some surface marks.
(illustrated) £500.00



363. 1888 S3925. Choice Virtually Mint State,
fields prooflike £175.00
364. 1889 S3925. Virtually BU, fields prooflike,
some minor marks £175.00
365. 1890 S3925. Choice Virtually Mint State
(illustrated) £450.00



366. 1891 Key Date. S3925. Near EF £295.00
367. 1892 Key Date. S3925. GEF
(illustrated) £450.00



368. 1893 S3939. Choice Mint State £175.00
369. 1894 S3939. Choice Virtually Mint State
(illustrated) £295.00



370. 1895 S3939. Choice Virtually Mint State
£245.00
371. 1897 S3939. Almost BU £145.00
372. 1898 S3939. Almost BU £195.00
373. 1899 S3939. Almost BU £175.00
374. 1900 S3939. Almost BU, couple of minor
marks £150.00
375. 1900 S3939. Choice Practically Mint State
(illustrated) £195.00



376. 1901 S3939. Choice Virtually BU £175.00
377. 1902 Edward VII. S3981.
Virtually BU £125.00

FLORINS (CONTINUED)

378. 1902 Edward VII Matt Proof Florin. S3981.
As Struck £195.00
379. 1903 Edward VII. S3981.
BU, lightly brushed. £150.00
380. 1904 Edward VII. S3981.
Choice Virtually BU
(**illustrated**) £475.00



381. 1905 Key Date Edward VII Florin. S3981.
Choice Almost Uncirculated
(**illustrated**) £1,500.00



382. 1906 Edward VII. S3981. EF £150.00
383. 1907 Edward VII. S3981.
Choice Almost BU (**illus**) £475.00



384. 1907 Edward VII. S3981.
Virtually BU (**illustrated**) £495.00



385. 1908 Edward VII. S3981. GEF
(**illustrated**) £395.00



386. 1908 Edward VII. S3981.
Virtually BU (**illustrated**) £550.00



387. 1909 Edward VII. S3981. Near EF £200.00
388. 1909 Edward VII. S3981. GEF
(**illustrated**) £350.00



FLORINS (CONTINUED)

389. 1909 Edward VII. S3981.
Choice Practically Mint State
(**illustrated**) £525.00



390. 1910 Edward VII. S3981.
Virtually BU (**illustrated**) £275.00



391. 1911 S4012. Choice Almost BU £150.00

392. 1911 George V Proof Florin. S4012.
As Struck, delightfully toned.
Encapsulated by CGS as Proof 90
£200.00

393. 1911 George V Proof Florin. S4012.
As Struck, toned £200.00

394. 1912 S4012. Virtually BU £225.00

395. 1913 S4012. Choice Practically Mint State
(**illustrated**) £275.00



396. 1914 S4012. Almost BU £150.00

397. 1915 S4012. Almost BU £150.00

398. 1916 S4012. Virtually BU £95.00

399. 1916 S4012. Choice Mint State
Graded and encapsulated by NGC as
MS64 (2774940-004) £175.00

400. 1917 S4012. Almost BU £95.00

401. 1918 S4012. Choice Virtually Mint State
£100.00

402. 1919 S4012. Almost BU £95.00

403. 1920 George V Florin. S4022.
Choice Mint State, extremely hard
year to find in high grade and rare in
this condition. £200.00

404. 1921 S4022A. Almost BU, some minor
marks £125.00

405. 1922 S4022A. Near EF £30.00

406. 1922 S4022A. Virtually BU £100.00

407. 1923 S4022A. Practically Mint State £80.00

408. 1924 S4022A. Virtually BU £145.00

409. 1925 S4022A. EF/GEF (**illustrated**) £300.00



410. 1926 S4022A. Almost BU £125.00

411. 1927 George V Proof. S4038.
As Struck £150.00

412. 1928 S4038. BU £35.00

413. 1929 S4038. Virtually BU £30.00

414. 1929 S4038. BU £50.00

415. 1930 S4038. BU £95.00

416. 1931 S4038. Almost BU £55.00

417. 1932 George V Key Date Florin. S4038.
Choice Virtually Mint State
(**illustrated**) £900.00



FLORINS (CONTINUED)

418.	1933	S4038. BU	£60.00
419.	1937	S4081. Almost BU	£20.00
420.	1937	Proof. S4081. FDC	£35.00
421.	1939	S4081. GEF	£8.00
422.	1942	S4081. Virtually BU	£20.00
423.	1945	S4081. GEF	£8.00
424.	1945	S4081. Almost BU	£20.00
425.	1953	Proof. S4138. FDC, lightly toning from the box on obverse.	£30.00
426.	1953	Proof. S4138. FDC	£40.00
427.	1965	Virtually BU	£1.50
428.	1965	BU	£3.00
429.	1967	BU	£1.25

SHILLINGS

430.	1663	Charles II. First bust. S3371. ESC 1022. GF, toned	£175.00
431.	1693	William & Mary. S3437. ESC 1076. Conjoined bust. Fine, dig on portrait	£150.00
432.	1696	William III. First Bust. S3497. ESC 1078. GF - Near VF	£75.00
433.	1697	William III. First bust. S3497. ESC 1091. Near EF, reverse better	£295.00
434.	1697	William III. CHESTER MINT (C below). First bust. S3499. ESC 1096. Fine	£80.00
435.	1700	William III. Fifth bust. S3516. ESC 1121. GVF	£175.00
436.	1703	Queen Anne. VIGO below. Second bust. S3586. ESC 1131. Bull 1388. Near EF, at some point cleaned.	£550.00
437.	1709	Queen Anne. Plain in Angles. Third bust. S3610. ESC 1154. GVF or better (illustrated)	£250.00



438. 1711 Queen Anne. Plain in Angles.
Fourth bust. S3618. ESC 1158.
GVF or better (**illustrated**) £225.00



439. 1712 Queen Anne. Roses & Plumes in Angles. Fourth bust. S3617. ESC 1159.
GF £105.00
440. 1714 Queen Anne. Roses & Plumes in Angles. Fourth bust. S3617. ESC 1161.
Bold GVF - Near EF, toned
(**illustrated**) £750.00



441. 1718 George I. Roses & Plumes in angles.
S3645. ESC 1165. Bold GVF, parts
nearer to EF (**illustrated**) £395.00



442. 1721/0 George I. Roses & Plumes in angles.
S3645. ESC 1172. Fine £110.00
443. 1723 George I. 1st Bust. SSC in angles.
S3647. ESC 1176. Near EF
(**illustrated**) £250.00



SHILLINGS (CONTINUED)

444. 1723 George I. 1st Bust. SSC in angles.
S3647. ESC 1176.
EF or better, lustrous £350.00
445. 1723 George I. 2nd Bust. SSC in angles.
S3648. ESC 1178. Near EF
(illustrated) £650.00



446. 1731 George II. Young Head.
Roses & Plumes in angles. S3698.
ESC 1194. Near VF
(illustrated) £225.00



447. 1735 George II. Young Head.
Roses & Plumes in angles. S3700.
ESC 1198. Fine, toned £95.00
448. 1736/5 George II. Young Head.
Roses & Plumes in angles. S3700.
ESC 1199A (R2).
GF/Near VF, toned £150.00
449. 1739 George II. Young Head.
Roses in angles. S3701. ESC 1201.
VF/GVF, bright £150.00
450. 1739 George II. Young Head.
Roses in angles. S3701. ESC 1201.
Bull 1713. Extremely Fine, attractively
toned. £695.00
451. 1741 George II. Young Head.
Roses in angles. S3701. ESC 1202.
Fine £50.00

452. 1741 George II. Young Head.
Roses in angles. S3701. ESC 1202.
GVF - Near EF, toned
(illustrated) £375.00



453. 1743 George II. Old Head. Roses in angles.
S3702. ESC 1203. VF £125.00
454. 1745 George II. Old Head. Roses in angles.
S3702. ESC 1204.
Near VF, weak on obverse. £125.00
455. 1745 George II. LIMA below. Old Head.
S3703. ESC 1205. Near VF £95.00
456. 1750 George II. Old Head. Plain in angles.
Thin 0 in date. S3704. ESC 1210.
VF £145.00
457. 1750 George II. Old Head. Plain in angles.
Thin 0 in date. S3704. ESC 1210.
Nearer to EF than VF
(illustrated) £350.00



458. 1750/46 George II. Old Head.
Plain in angles. S3704.
Near VF £115.00
459. 1758 George II. Old Head. Plain in angles.
S3704. ESC 1213. EF, cleaned £50.00
460. 1758 George II. Old Head. Plain in angles.
S3704. ESC 1213.
Choice EF or better £225.00
461. 1787 Without Hearts. ESC 1216. S3743.
GVF £45.00
462. 1787 With Hearts. ESC 1225. S3746.
Choice GEF, minutest of hairlines
£125.00

SHILLINGS (CONTINUED)

463. 1816 S3790. Almost BU £150.00
 464. 1816 S3790. Almost BU, light golden tone £150.00
 465. 1816 S3790. Choice Virtually BU £175.00
 466. 1816 S3790. Practically Mint State £195.00
 467. 1817 George III. Laur head. S3790. GVF £50.00
 468. 1817 George III. Laur head. S3790. GVF, darkly toned. £50.00
 469. 1817 George III. Laur head. S3790. Near EF, toned £70.00
 470. 1817 George III. Laur head. S3790. Almost BU, lustrous £175.00
 471. 1817 George III. Laur head. S3790. Choice Virtually BU, lustrous £195.00
 472. 1817 George III. Laur head. S3790. Virtually BU, attractively toned. £195.00
 473. 1817 George III. Laur head. S3790. Choice Mint State **(illustrated)** £225.00



474. 1817 RRITT flaw. S3790. Interestingly unbarred H in HONI. Near VF £45.00
 475. 1817 RRITT flaw. S3790. Interestingly unbarred H in HONI. VF+, toned £75.00
 476. 1817 GEOE error. S3790. ESC 1232A (R3). E/R in GEOR. GF - Near VF £125.00
 477. 1818 High 8. S3790. ESC 1234a (R). Virtually BU, choice **(illustrated)** £425.00



478. 1819 S3790. Near VF £35.00
 479. 1819 S3790. EF, toned £90.00
 480. 1819 S3790. Almost BU, attractively toned. £195.00
 481. 1819 S3790. Almost BU, toned £195.00
 482. 1819/8 S3790. GEF, rare **(illustrated)** £195.00



483. 1820 S3790. EF £90.00
 484. 1820 S3790. GEF, some flaws on obverse £95.00
 485. 1820 S3790. Almost BU £150.00
 486. 1820 S3790. Virtually BU, lustrous £175.00
 487. 1821 S3810. Virtually BU, lightly brushed/cleaned. £125.00
 488. 1823 S3811. GEF, some marks, bright, very rare £150.00
 489. 1824 S3811. GVF £95.00
 490. 1824 S3811. EF, toned £175.00
 491. 1825 George IV. Laur. Head. S3811. EF, some marks, bright on obverse £75.00
 492. 1825 George IV. Bare Head. S3812. Bull 2405. ESC 1254. Almost BU, some marks and hairlines. £225.00
 493. 1825 George IV. Bare Head. S3812. Bull 2405. ESC 1254. Almost BU, toned. £395.00
 494. 1825 George IV. Bare Head. S3812. Bull 2405. ESC 1254. Almost BU **(illustrated)** £425.00



SHILLINGS (CONTINUED)

495. 1825 George IV. Bare Head. Roman I in date. S3812. GF £150.00
 496. 1826 George IV. S3812. Near Fine £12.00
 497. 1826 George IV. S3812. Near VF £40.00
 498. 1826 George IV. S3812. Near EF/ EF £80.00
 499. 1826 George IV. S3812. EF, toned £95.00
 500. 1826 George IV. S3812. Almost BU (illustrated) £325.00



501. 1826 George IV Proof. Bare Head. S3812. As Struck, light golden tone. £995.00
 502. 1827 Key Date. S3812. EF, rare (illustrated) £350.00



503. 1829 S3812. GF £45.00
 504. 1829 S3812. Near VF £75.00
 505. 1829 S3812. Almost BU, choice and light toning. (illustrated) £650.00



506. 1831 William III Plain Edge Proof. S3835. ESC 1266. Bull 2488. Superb As Struck, exquisitely toned. Minuscule bruise on reverse. (illustrated) £1,000.00



507. 1834 William III. S3835. Choice Virtually BU, exquisitely toned. (illustrated) £550.00



508. 1835 William III. S3835. Choice Practically Mint State (illustrated) £595.00



509. 1837 William III. S3835. GF, rare £60.00
 510. 1838 S3902. EF/GEF (illustrated) £250.00



511. 1839 WW on Truncation. S3902. ESC 1280, R. Bull 2975. GVF/Near EF, rare and seldom seen. £195.00

SHILLINGS (CONTINUED)

512. 1839 Proof. WW on truncation.
Reverse upright. S3903.
As Struck, lightly brushed/cleaned.
(illustrated) £750.00



513. 1839 No initials on Truncation. S3904.
Choice Practically Mint State
(illustrated) £475.00



514. 1840 S3904. GF, rare £60.00
515. 1841 S3904. GVF/Near EF, rare £150.00
516. 1842 S3904. Choice Virtually Mint
State (illustrated) £550.00



517. 1843 S3904. Near VF, very rare £125.00
518. 1844 S3904. GVF or better, cleaned. £45.00
519. 1845 S3904. Fine £40.00
520. 1845 S3904. GEF, lightly brushed. £150.00
521. 1845 S3904. Almost BU, rare £525.00
522. 1846 S3904. GF/Near VF £45.00
523. 1846 S3904. EF, toned. £175.00

524. 1848/6 S3904. GEF, extremely rare
(illustrated) £950.00



525. 1849 S3904. GEF/Almost BU, rare
(illustrated) £450.00



526. 1850 Key Date. S3904. ESC 1296 (R3)
(Much rarer than ESC suggests).
Near VF/GVF, extremely rare
(illustrated) £1,950.00



527. 1851 Key Date. S3904. ESC 1298 (R2).
Bull 2999. Near VF, brushed, rare
£95.00

528. 1852 S3904. GEF, light golden tone.
(illustrated) £225.00



529. 1852 S3904. Almost BU, attractively
toned. £350.00
530. 1853 S3904. Near VF £45.00
531. 1853 S3904. Near EF, toned £95.00

SHILLINGS (CONTINUED)

532. 1853 S3904. Near EF/EF, toned. £150.00
 533. 1854 Key Date. ESC 1302 (R2), Bull 3004, S3904. Fine/GF, very rare (illustrated) £295.00



534. 1855 S3904. Near EF £150.00
 535. 1855 S3904. GEF/ABU, toned. £250.00
 536. 1855 S3904. Choice Virtually BU, fields Prooflike (illustrated) £395.00



537. 1856 S3904. Near EF/EF £110.00
 538. 1856 S3904. Almost Unc, lustrous £275.00
 539. 1856 S3904. Choice Virtually BU £395.00
 540. 1857 S3904. GF/Near VF £45.00
 541. 1857 S3904. Virtually BU, fields Prooflike (illustrated) £395.00



542. 1857 REG F:G (G inverted) error. Inverted G in F:D. S3904. Bold Fine, extremely rare (illustrated) £300.00



543. 1858 S3904. Near EF £150.00
 544. 1858 S3904. Virtually BU, choice and prooflike, couple of minor hairlines. (illustrated) £325.00



545. 1858 S3904. Choice Virtually BU £395.00
 546. 1859 S3904. GEF, cleaned £100.00
 547. 1859 S3904. Choice Virtually BU £450.00
 548. 1859/8 S3904. GVF £125.00
 549. 1860 S3904. Virtually BU, light steely tone. (illustrated) £450.00



550. 1861 S3904. GVF+/Near EF £75.00
 551. 1861 S3904. Almost BU £395.00
 552. 1862 S3904. GEF, rare (illustrated) £495.00



553. 1863 S3904. Almost BU, very rare (illustrated) £1,250.00



SHILLINGS (CONTINUED)

554. 1864 S3905. Die Number 7.
Almost BU, lustrous £395.00

555. 1864 S3905. Die Number 6.
Almost BU, light golden tone.
(illustrated) £395.00



556. 1865 S3905. Die Number 99.
EF/GEF £195.00

557. 1865 S3905. Die Number 41. GEF £225.00

558. 1865 S3905. Die Number 77.
GEF/Almost BU, couple of minor
marks. (illustrated) £250.00



559. 1865 S3905. Die Number 70.
Almost BU £325.00

560. 1866 S3905. Die Number 48.
Almost BU (illustrated) £300.00



561. 1866 S3905. Die Number 58.
Virtually BU £350.00

562. 1866 Die Number 44. S3905.
Choice Practically Mint State £395.00

563. 1867 S3905. Die Number 32. GVF £65.00

564. 1868 S3906A. Die Number 43.
GEF/Almost BU (illustrated) £200.00



565. 1868 S3906A. Die Number 34.
Almost BU £350.00

566. 1870 S3906A. Die Number 1.
GEF/Almost BU (illustrated) £225.00



567. 1870 S3906A. Die Number 16.
Choice Almost BU £350.00

568. 1871 S3906A. Die Number 21.
GEF £175.00

569. 1871 S3906A. Die Number 37.
GEF/Almost BU, toned
(illustrated) £225.00



570. 1871 S3906A. Die Number 12.
Almost BU £350.00

571. 1872 S3906A. Die Number 120. EF £145.00

572. 1872 S3906A. Die Number 70.
Almost BU (illustrated) £295.00



SHILLINGS (CONTINUED)

573. 1872 S3906A. Die Number 37.
Virtually BU £350.00
574. 1873 S3906A. Die Number 42.
Almost BU, very bright £100.00
575. 1874 S3906A. Die Number 9.
Almost BU (**illustrated**) £295.00



576. 1875 S3906A. Die Number 6.
GEF, cleaned £50.00
577. 1876 S3906A. Die Number 16. GEF £150.00
578. 1877 S3906A. Die Number 3. GEF £150.00
579. 1878 S3906A. Die Number 7.
GEF, lightly cleaned. £75.00
580. 1879 S3907. Die Number 1. EF £100.00
581. 1879 S3907. No Die Number. EF £100.00
582. 1879 S3907. No Die Number.
Almost BU, some minor marks. £275.00
583. 1879 S3907. No Die Number.
Almost BU £295.00
584. 1880 S3907. Almost BU
(**illustrated**) £245.00



585. 1880 S3907. Virtually BU £275.00
586. 1880 S3907. Choice Virtually Mint State
(**illustrated**) £295.00



587. 1881 S3907. EF £85.00
588. 1881 S3907. Virtually BU (**illus**) £225.00



589. 1882 S3907. Near EF, cross scratched in
obverse field. £60.00
590. 1883 S3907. Near EF, lightly toned. £95.00
591. 1883 S3907. Near EF £95.00
592. 1883 S3907. Almost BU (**illus**) £250.00



593. 1884 S3907. EF £95.00
594. 1884 S3907. GEF, toned £125.00
595. 1884 S3907. Almost BU (**illus**) £225.00



596. 1885 S3907. GEF, some minor marks.
£95.00
597. 1885 S3907. Almost BU £195.00
598. 1885 S3907. Choice Virtually BU £250.00
599. 1886 S3907. Near EF, toned. £75.00
600. 1887 Small Jubilee Head Proof Shilling.
S3926. Brilliant As Struck, very
minor hairlines. (**illustrated**) £400.00



SHILLINGS (CONTINUED)

601. 1887 JH. Rev. C. S3926. GVF £10.00
 602. 1887 JH. Rev. C. S3926.
 GEF, light gold tone. £25.00
 603. 1887 JH. Rev. C. S3926.
 Choice Virtually BU, exquisite purple
 toning. £50.00
 604. 1887 JH. Rev. C. S3926.
 Virtually BU, lustrous £50.00
 605. 1887 YH. S3907. Almost BU
 (illustrated) £295.00



606. 1888 S3926. Not 8/7.
 GEF toned, extremely rare £175.00
 607. 1888/7 S3926. GEF £55.00
 608. 1888/7 S3926. Almost BU £85.00
 609. 1889 LH. S3927. Almost BU £85.00
 610. 1889 LH. S3927. Virtually BU £90.00
 611. 1889 LH. S3927. Choice BU £125.00
 612. 1889 SH. S3926. ESC 1354.
 Near EF, extremely rare £275.00
 613. 1889 SH. S3926. ESC 1354.
 Choice Virtually Mint State,
 extremely rare (illustrated) £875.00



614. 1890 S3927. GEF £70.00
 615. 1890 S3927. Choice Virtually BU £115.00
 616. 1890 S3927. Choice BU £150.00
 617. 1890 S3927. Choice BU (illus) £150.00



618. 1891 S3927. Virtually Mint State
 (illustrated) £175.00



619. 1892 S3927. Almost BU £145.00
 620. 1892 S3927. Choice Virtually BU £195.00
 621. 1893 Old Head. ESC 1361. S3940.
 Almost BU £75.00
 622. 1893 Old Head. ESC 1361. S3940.
 Obverse Large Letters. BU
 (illustrated) £100.00



623. 1893 Old Head. ESC 1361A. S3940.
 Smaller Lettering on Obverse.
 Choice Virtually BU £95.00
 624. 1893 Proof. Old Head. ESC 1362. S3940.
 Brilliant As Struck, minor marks on
 obverse. (illustrated) £400.00



625. 1894 ESC 1363. S3940.
 Choice Virtually BU, steely tone. £150.00
 626. 1895 Larger Rose. S3940A. EF £50.00
 627. 1896 ESC 1365. S3940A. Larger Rose.
 GEF £60.00
 628. 1896 ESC 1365. S3940A. Larger Rose.
 Almost BU £125.00
 629. 1896 ESC 1365. S3940A. Larger Rose.
 Almost BU £125.00

SHILLINGS (CONTINUED)

630. 1896 ESC 1365A (R3). S3940.
Small Rose. GEF £75.00
631. 1897 S3940A. Choice BU
(illustrated) £150.00



632. 1898 S3940A. GVF £20.00
633. 1898 S3940A. GEF £65.00
634. 1898 S3940A. Virtually BU £150.00
635. 1899 S3940A. Virtually BU, light scratch
in obverse field. £65.00
636. 1899 S3940A. GEF £75.00
637. 1900 S3940A. GEF, toned £50.00
638. 1900 S3940A. Virtually BU, attractively
toned. £95.00
639. 1901 S3940A. GEF £50.00
640. 1901 S3940A. Choice Virtually BU £95.00
641. 1902 Edward VII. S3982.
Choice GEF or better £75.00
642. 1902 Edward VII. S3982. Almost BU £95.00
643. 1902 Edward VII. S3982. Almost BU £95.00
644. 1902 Edward VII. S3982.
Virtually BU £105.00
645. 1902 Edward VII. S3982.
Choice Mint State, exquisite olive
toning. £140.00
646. 1902 Edward VII Matt Proof. S3982.
As Struck, lustrous £175.00
647. 1903 Edward VII. S3982.
Almost BU (illustrated) £375.00



648. 1904 Edward VII. S3982.
Near EF/EF toned £125.00

649. 1904 Edward VII. S3982.
Almost BU, toned.
(illustrated) £375.00



650. 1905 Edward VII Shilling. Key Date.
S3982, Bull 3591, ESC 1414.
GEF, very lightly brushed on
reverse. (illustrated) £750.00



651. 1906 Edward VII. S3982.
Almost BU, light golden tone. £125.00
652. 1906 Edward VII. S3982.
Almost BU £125.00
653. 1906 Edward VII. S3982.
Almost BU £125.00
654. 1906 Edward VII. S3982. Virtually Mint
State, light gold toning. £175.00
655. 1907 Edward VII. S3982.
Almost BU £195.00
656. 1907 Edward VII. S3982.
Almost BU £195.00
657. 1908 Edward VII. S3982.
Choice Virtually BU £175.00
658. 1909 Edward VII. S3982.
Choice Virtually BU £450.00
659. 1909 Edward VII. S3982.
Choice Mint State
(illustrated) £550.00



SHILLINGS (CONTINUED)

660. 1910 Edward VII. S3982. Fine £8.00
 661. 1910 Edward VII. S3982. EF £75.00
 662. 1910 Edward VII. S3982. EF £75.00
 663. 1910 Edward VII. S3982.
 Virtually BU £150.00
 664. 1911 S4013. GEF £40.00
 665. 1911 S4013. Almost BU £65.00
 666. 1911 S4013. Almost BU £65.00
 667. 1911 George V Proof Shilling. S4013.
 Superb As Struck, delightfully
 toned. (illustrated) £150.00



668. 1912 S4013.
 Choice Practically Mint State
 (illustrated) £125.00



669. 1913 S4013. EF, toned £75.00
 670. 1913 S4013. Almost BU, lightly toned.
 £195.00
 671. 1914 S4013. BU, lightly toned. £90.00
 672. 1914 S4013. Choice BU with brilliance
 (illustrated) £90.00



673. 1915 S4013. Virtually BU £75.00
 674. 1916 S4013. Almost BU £65.00
 675. 1916 S4013. Choice BU, light attractive
 toning. £95.00

676. 1917 S4013. BU (illustrated) £125.00



677. 1918 S4013. BU (illustrated) £90.00



678. 1919 S4013. Virtually BU £85.00
 679. 1919 S4013. Virtually BU £85.00
 680. 1920 S4023. GEF £75.00
 681. 1922 S4023A. Almost BU, toned. £95.00
 682. 1923 S4023A.
 Choice Virtually BU, lustrous £95.00
 683. 1923 S4023A. Choice Virtually BU,
 attractively toned. £95.00
 684. 1923 S4023A. Virtually BU, attractively
 toned. £95.00
 685. 1924 S4023A. Almost BU, a couple of
 minor marks £95.00
 686. 1924 S4023A. Choice Virtually BU £110.00
 687. 1925 S4023A. Choice Virtually BU £150.00
 688. 1926 Modified effigy. S4033.
 Almost BU £50.00
 689. 1926 Modified effigy. S4033. BU
 (illustrated) £65.00



690. 1926 OE. S4023A. Almost BU £90.00

SHILLINGS (CONTINUED)

691. 1927 George V Proof Shilling. S4039.
Superb As Struck (**illustrated**) £95.00



692. 1927 1st Issue. S4033. Almost BU £65.00
693. 1927 1st Issue. S4033.
Almost BU, attractively toned. £65.00
694. 1927 2nd Issue. S4039. Almost BU £70.00
695. 1927 2nd Issue. S4039. Choice BU
(**illustrated**) £85.00



696. 1928 S4039. Virtually BU £35.00
697. 1929 S4039. BU (**illustrated**) £50.00



698. 1930 S4039. Virtually BU, rare
(**illustrated**) £110.00



699. 1931 S4039. BU (**illustrated**) £50.00



700. 1932 S4039. BU (**illustrated**) £55.00



701. 1933 S4039. Almost BU £45.00
702. 1934 S4039. Almost BU £50.00
703. 1935 S4039. Virtually BU £45.00
704. 1936 S4039. BU (**illustrated**) £30.00



705. 1937S Proof. S4083. FDC £35.00
706. 1944E Almost BU £15.00
707. 1946E Virtually BU £12.00
708. 1948S Almost BU £8.00
709. 1949S Almost BU £20.00
710. 1953E BU £6.00
711. 1953E Proof. S4139. FDC £20.00
712. 1953E Proof. S4139. FDC £20.00
713. 1953E Proof. S4139. FDC £20.00
714. 1953S BU £6.00
715. 1953S Proof. S4140. FDC £20.00
716. 1953S Proof. S4140. FDC £20.00
717. 1959S VF £1.00
718. 1959S GVF £2.00
719. 1959S S4148. EF/GEF £20.00
720. 1965E BU £2.00
721. 1966E BU £2.00
722. 1966S BU £2.00

SIXPENCES

723. 1651 Pattern Commonwealth Sixpence by Blondeau. mm Sun. ESC 1498, R2. Bull 217. GVF, toned
(**illustrated**) £2,250.00



724. 1683 Charles II. S3382. ESC 1523. Choice GEF, light golden tone.
£750.00

725. 1696 William III. Early harp, 1st bust. Large Crowns. S3520. ESC 1533. Near VF (**illustrated**) £50.00



726. 1696 William III. y below (YORK). Early harp, 1st bust. Large Crowns. S3525. ESC 1539. GEF, pleasing £395.00

727. 1697 William III. Later harp, 3rd bust. Large Crowns. S3538. ESC 1566. Near VF (**illustrated**) £55.00



728. 1711 Queen Anne. Angles plain. S3619. ESC 1596. GF (**illustrated**) £45.00



729. 1723 George I. SSC in angles. S3652. ESC 1600. Small lettering on obverse. Near VF (**illustrated**) £75.00



730. 1723 George I. SSC in angles. S3652. ESC 1600. Small lettering on obverse. About EF (**illustrated**) £350.00



731. 1741 George II. Roses in angles. S3708. ESC 1613. About EF (**illus**) £375.00



732. 1743 George II. Roses in angles. S3709. ESC 1614. GF (**illustrated**) £40.00



733. 1745 George II. Roses in angles. S3709. ESC 1615. Near VF, ex mount £20.00

734. 1745/3 George II. Roses in angles. S3709. ESC 1616 (R2). GVF or better (**illustrated**) £195.00



SIXPENCES (CONTINUED)

735. 1746 George II. LIMA below bust.
Angles plain. S3710A. ESC 1618.
Near VF (**illustrated**) £75.00



736. 1746/5 George II. LIMA below bust.
Angles plain. S3710A. ESC 1618A R2.
GVF, toned (**illustrated**) £175.00



737. 1750 George II. Angles plain. S3711.
ESC 1620. Near VF
(**illustrated**) £60.00



738. 1757 George II. Angles plain. S3711.
ESC 1622. GVF or better
(**illustrated**) £75.00



739. 1758 George II. Angles plain. S3711.
ESC 1623. GF £25.00

740. 1758/7 George II. Angles plain. S3711.
ESC 1624. GEF (**illustrated**) £175.00



741. 1787 With Hearts. S3749. GVF+
(**illustrated**) £75.00



742. 1787 No Hearts. S3748. GVF+
(**illustrated**) £75.00



743. 1790 Pattern Sixpence by Droz. ESC 2219.
GEF, toned. £595.00

744. 1825 Laur. Head. S3814.
Almost BU £225.00

745. 1834 S3836. Almost BU £275.00

746. 1835 S3836. Choice Mint State, attractively
toned.
Encapsulated by NGC as MS63
(6381344-023) £395.00

747. 1835 S3836. Choice Mint State,
exquisitely toned. £395.00

748. 1839 S3908. Almost BU, toned £275.00

749. 1851 S3908. Choice Virtually Mint State
£350.00

750. 1853 S3908. Choice Practically Mint
State, fields prooflike £375.00

751. 1875 S3910. Die Number 2.
Almost BU, light gold tone. £245.00

752. 1883 S3912. GEF, delightfully toned.
£125.00

753. 1886 S3912. Almost BU, attractively
toned. £150.00

SIXPENCES (CONTINUED)

754.	1887	YH. S3912. Virtually BU attractively toned.	£140.00
755.	1893	OH. S3941. GEF	£45.00
756.	1898	S3941. Old veiled bust. Choice Practically Mint State, attractive blue olive toning.	£95.00
757.	1901	S3941. Old veiled bust. Almost BU	£60.00
758.	1910	Edward VII. S3983. Bare head. GEF toned	£55.00
759.	1910	S3983. Bare head. Choice Virtually BU, toned	£80.00
760.	1911	S4014. Almost BU	£45.00
761.	1916	Almost BU	£50.00
762.	1926	ME. S4034. Virtually BU	£50.00
763.	1926	ME. S4034. BU, exquisitely toned.	£85.00
764.	1928	S4040. EF	£10.00
765.	1932	S4041. GEF	£25.00
766.	1936	S4041. GEF	£10.00
767.	1936	S4041. Almost BU	£16.00
768.	1936	S4041. Virtually BU	£20.00
769.	1953	BU	£6.00
770.	1953	Proof. S4141. FDC	£20.00
771.	1953	Proof. S4141. FDC	£20.00
772.	1956	BU	£12.00
773.	1959	BU	£8.00
774.	1965	BU	£2.00
775.	1967	BU	£1.00

SILVER THREEPENCES

776.	1893	OH. S3942. Virtually BU, toned	£50.00
777.	1897	EF	£16.00
778.	1900	S3942. Almost BU	£40.00
779.	1901	S3942. Almost BU, toned	£35.00
780.	1901	S3942. Almost BU, toned	£35.00
781.	1902	S3984. GEF	£15.00
782.	1902	S3984. BU, attractively toned	£40.00
783.	1908	S3984. Fine	£1.25
784.	1908	S3984. Almost BU, toned, slight nick on edge.	£30.00
785.	1908	S3984. Virtually BU, lightly toned.	£50.00
786.	1937	S4085. BU	£12.00
787.	1940	S4085. BU	£25.00
788.	1942	S4085. BU	£45.00

GROATS

789.	1836	William III. S3837. GEF, toned	£85.00
790.	1836	William III. S3837. GEF/Almost BU (illustrated)	£110.00



791.	1837	William III. S3837. GEF (illustrated)	£95.00
------	------	---	--------



792.	1839	S3913. GEF/Almost BU (illustrated)	£95.00
------	------	--	--------



793.	1840	S3913. GEF/Almost BU (illustrated)	£95.00
------	------	--	--------



794.	1842	S3913. Near EF/EF	£45.00
------	------	-------------------	--------

795.	1844	S3913. GEF/Almost BU (illustrated)	£95.00
------	------	--	--------



796.	1849	S3913. GEF/Almost BU (illus)	£95.00
------	------	---------------------------------------	--------



BRASS THREEPENCES

797.	1937	Proof. S4112. FDC, lightly toned	£20.00
798.	1946	Fine, rare	£6.00
799.	1946	GF, rare	£8.00
800.	1953	BU Full Lustre	£4.00
801.	1953	Proof. S4152. FDC, lightly toning.	£15.00
802.	1965	BU Full Lustre	£4.00
803.	1967	BU Full Lustre	£2.00
804.	1970	Proof. FDC	£5.00

MAUNDY ODDMENTS

805.	4d	1835 William IV. S3841. As Struck	£75.00
806.	4d	1851 Victoria. S3917. As Struck, toned	£45.00
807.	4d	1902 Edward VII Matt Proof. S3986. As Struck	£35.00
808.	4d	1904 Edward VII. S3986. Unc, toned	£45.00
809.	4d	1905 Edward VII. S3986. Unc, toned	£30.00
810.	4d	1935 George V. S4044. As Struck, toned.	£35.00
811.	2d	1840 Victoria. S3919. As Struck, toned.	£40.00
812.	2d	1904 Edward VII. S3988. Unc, toned	£40.00
813.	2d	1905 Edward VII. S3988. As Struck, toned	£35.00
814.	2d	1911 George V. S4019. As Struck, delightfully toned.	£40.00
815.	2d	1922 George V. S4030. As Struck	£40.00
816.	2d	1968 Elizabeth II. S4134. As Struck	£40.00
817.	1d	1792 George III. S3760. 'Wire Money' GEF	£95.00
818.	1d	1800 George III. S3761. GEF	£65.00
819.	1d	1820 George III. S3796. As Struck, toned.	£75.00

MAUNDY SETS

820.	1902	Edward VII Matt Proof Maundy Set. S3985. As Struck, toned.	£195.00
------	------	---	---------

CORONATION MEDALS

821.	1630	Charles I Silver Medal. Birth of Prince Charles 29th May. 24mm. (Mli 254/36). Eimer 116. EF, toned Ex Baldwins Dec 2011 £195 (tickets enclosed)	£295.00
------	------	--	---------

PENNIES

822.	1806	Copper Proof Penny. BMC 1329. Superb As Struck with some original red lustre on both sides. Encapsulated by NGC as PF 64 BN (6319316-002) Ex The Coinery Collection	£695.00
823.	1841	No Colon after REG. BMC 1484. S3948. EF, slight edge bruise at 11pm on obverse.	£60.00
824.	1853	O.T. Close Colon. EF	£80.00
825.	1853	O.T. Choice Uncirculated	£175.00
826.	1854	O.T. BMC 1507. S3948. Far Colon. A/Unc with hints of lustre Previously Wrongly Encapsulated as Plain Trident in an old NGC holder as MS61 BN (576770-005)	£125.00
827.	1854	P.T. BMC 1506. S3948. Near Colon. Choice Unc toned.	£150.00
828.	1854	P.T. BMC 1506. S3948. Near Colon. Choice Uncirculated with a hint of lustre	£160.00
829.	1858	O.T. No WW. F struck over B in DEF. GVF	£150.00
830.	1865	Victoria. Toothed Border. BMC 1667. F50. Dies 6+G. S3954. Gouby A. Choice Uncirculated with traces of lustre Encapsulated by NGC as MS63 BN (8222423-005)	£350.00
831.	1876H	BMC 1708. F89. Dies 8+K. S3955. A/Unc hints of lustre	£150.00
832.	1876H	BMC 1708. F89. Dies 8+K. S3955. A/Unc with traces of lustre on both sides.	£150.00
833.	1888	BMC 1740. F126. Dies 12+N. Gouby A. S3954. GEF, toned/burnished	£50.00
834.	1892	Fair	£1.00

PENNIES (CONTINUED)

- | | | | |
|------|------|--|---------|
| 835. | 1892 | Victoria. Toothed Border.
14 teeth from the foot of the 1 to the
front tip of the 2 in date. BMC 1746.
F134. Dies 12+N. S3954. Gouby Ab.
Choice BU Full Lustre, ever so lightly
toning on obverse.
Encapsulated by NGC as MS64 RB
(8222423-020) | £250.00 |
| 836. | 1900 | BMC 1947. F153. S3961.
Unc good lustre | £30.00 |
| 837. | 1900 | BMC 1947. F153. S3961.
BU Almost Full Lustre, some minor
toning spots. | £45.00 |
| 838. | 1901 | BMC 1948. F154. S3961.
Unc good lustre | £15.00 |
| 839. | 1902 | S3990. BU Almost Full Lustre | £40.00 |
| 840. | 1912 | H. Fine | £2.00 |
| 841. | 1918 | KN. Near Fine - Fine | £2.50 |
| 842. | 1918 | KN. Fine | £3.50 |
| 843. | 1919 | BMC 2255. F185. S4051.
BU Almost Full Lustre | £45.00 |
| 844. | 1920 | BMC 2258. F188. S4051.
Unc lustre | £25.00 |
| 845. | 1927 | BMC 2267. F197. Dies 4+C.
BU Full Lustre, lightly toning. | £35.00 |
| 846. | 1936 | (BMC 2359. F214 Dies 5+C. S4055).
BU Full Lustre, lightly toning. | £24.00 |
| 847. | 1965 | (F255 Dies 3+H. S4157).
BU Full Lustre | £2.00 |
| 848. | 1966 | (F256 Dies 3+I. S4157).
BU Full Lustre, lightly toning. | £1.00 |
| 849. | 1967 | (F257 Dies 3+J. S4157).
BU Full Lustre, lightly toning | £1.00 |
| 850. | 1967 | (F257 Dies 3+J. S4157).
BU Full Lustre | £1.50 |

Selling Your Coins?

We are always keen to acquire new material.

If you are contemplating selling any of your coins, whether it be your whole collection or just individual pieces or duplicates.

Please do not hesitate to contact to us, we are always keen to buy new material.

CARTWHEEL 2d

- | | | | |
|------|------|---|---------|
| 851. | 1797 | George III Cartwheel Twopence.
BMC 1077. S3777.
EF, some surface marks. | £150.00 |
|------|------|---|---------|

**HALFPENNIES**

- | | | | |
|------|------|--|---------|
| 852. | 1694 | William & Mary. BMC 602. S3452.
VF overall but portrait bold and
better. Some pitting. | £225.00 |
| 853. | 1699 | William III. BMC 687. Date in Exergue
S3556. Near VF | £95.00 |
| 854. | 1731 | George II. First Issue - Young Head.
BMC 840. S3717.
Near EF, some marks | £195.00 |
| 855. | 1740 | George II. Second Issue - Old Head.
BMC 870. S3718. EF, toned. | £300.00 |
| 856. | 1746 | EF but struck from a rusty die | £95.00 |
| 857. | 1753 | George II. Second Issue - Old Head.
BMC 883. S3719.
Choice Unc, toned. | £395.00 |
| 858. | 1772 | George III. BMC 899. S3774.
Reverse A. VF | £50.00 |
| 859. | 1799 | George III. BMC 1248. S3778.
5 Incuse gunports on ship.
A/Unc hints of lustre | £95.00 |
| 860. | 1799 | George III. BMC 1248. S3778.
5 Incuse gunports on ship.
Unc hints of lustre | £110.00 |
| 861. | 1799 | George III. BMC 1249. S3778.
6 Relief gunports on ship.
Choice Uncirculated with traces of
lustre | £135.00 |
| 862. | 1799 | George III. BMC 1249. S3778.
6 Relief gunports on ship.
Unc traces of lustre | £135.00 |

HALFPENNIES (CONTINUED)

863.	1799	BMC 1235. Pattern (early Soho). Copper Proof. Edge, grained. Almost As Struck with original colours.	£395.00	883.	1853/2	BMC 1538. S3949. 3 over 2 in the date. Unc traces of lustre	£150.00
864.	1806	George III. BMC 1376. S3781. No berries - No line under 'SOHO'. Choice Unc, toned.	£95.00	884.	1854	BMC 1542. S3949. EF	£45.00
865.	1806	George III. BMC 1377. S3781. 3 Berries - Line under 'SOHO'. Unc good lustre	£175.00	885.	1854	BMC 1542. S3949. Unc traces of lustre	£150.00
866.	1806	George III Bronzed Proof. BMC 1370. As Struck, some toning spots	£225.00	886.	1855	BMC 1543. S3949. Unc a hint of lustre	£95.00
867.	1806	George III Bronzed Proof. BMC 1370. KH 42. Selig 1405. As Struck, couple of very minor marks	£395.00	887.	1856	BMC 1544. S3949. GEF	£65.00
868.	1806	George III Bronzed Proof. BMC 1363. Superb As Struck, small toning spot on obverse	£350.00	888.	1856	BMC 1544. S3949. Uncirculated with a hint of lustre	£125.00
869.	1806	George III Bronzed Proof. BMC 1363. Pleasing As Struck, some original colour	£450.00	889.	1857	BMC 1546. S3949. Reverse A. EF, scratches in the reverse fields.	£30.00
870.	1827	Near EF	£90.00	890.	1857	BMC 1545. S3949. Reverse B - Incuse Dots. Unc toned	£85.00
871.	1827	George IV. GEF or better	£125.00	891.	1858	BMC 1549. S3949. Unc traces of lustre	£115.00
872.	1827	George IV. BMC 1438. S3824. Unc some lustre both sides.	£225.00	892.	1858/6	BMC 1547. S3949. 8 over 6 in the date. Unc traces of lustre, some minor marks.	£125.00
873.	1841	BMC 1524. S3949. Choice A/Unc	£85.00	893.	1858/7	BMC 1548. S3949. 8 over 7 in the date. Unc hints of lustre	£125.00
874.	1841	BMC 1524. S3949. Choice A/Unc with lustre on both sides.	£95.00	894.	1860	Beaded Border. 1+A. BMC 1750. F258 (R8). S3956. BU Full Lustre, minor marks.	£175.00
875.	1841	BMC 1524. S3949. DF.I variety. Unc hints of lustre	£95.00	895.	1874H	BMC 1806. F318 (R8). S3957. Unc, toned	£125.00
876.	1841	BMC 1524. S3949. Choice Unc traces of lustre	£110.00	896.	1880	BMC 1827. F340 (R12). S3956. Unc good lustre or better	£175.00
877.	1841	BMC 1524. S3949. Unc good lustre	£140.00	897.	1884	BMC 1837. F352 (R5). S3956. Unc traces of lustre	£95.00
878.	1853	BMC 1539. S3949. Dots on shield. GEF	£45.00	898.	1887	BMC 1843. F358 (R4). S3956. BU Full Lustre, toning on the reverse.	£125.00
879.	1853	BMC 1539. S3949. Dots on shield. A/Unc, toned	£50.00	899.	1889	BMC 1845. F360 (R5). S3956. Unc good lustre	£70.00
880.	1853	BMC 1539. S3949. Dots on shield. BU Almost Full Lustre	£150.00	900.	1889	BMC 1845. F360 (R5). S3956. BU Almost Full Lustre	£90.00
881.	1853	5 over 5 in date. BMC 1539. S3949. Italic 5. A/Unc cleaned.	£50.00	901.	1890	BMC 1846. F362 (R3). S3956. BU Full Lustre	£150.00
882.	1853/2	BMC 1538. S3949. 3 over 2 in the date. Unc a hint of lustre on the reverse.	£125.00	902.	1891	BMC 1848. F364 (R3). S3956. BU Full Lustre, lightly toning	£125.00
				903.	1891	BMC 1848. F364 (R3). S3956. BU Full Lustre	£150.00
				904.	1896	Old Head. BMC 1951. F372 1+B. S3962. BU Almost Full Lustre	£75.00

HALFPENNIES (CONTINUED)

905.	1897	S3962. Unc good lustre	£30.00
906.	1897	Old Head. BMC 1951A. F373 (R2) 1+B. S3962. Low Tide. BU Full Lustre, toned on obverse.	£75.00
907.	1899	Old Head. BMC 1954. F376. S3962. BU Full Lustre, lightly toning.	£95.00
908.	1900	Old Head. BMC 1955. F377. S3962. BU Full Lustre, lightly toning.	£95.00
909.	1901	Old Head. BMC 1956. F378. S3962. Unc good lustre	£15.00
910.	1901	Old Head. BMC 1956. F378. S3962. BU Full Lustre, lightly toning	£75.00
911.	1903	BMC 2223. F382. S3991. BU Full Lustre, some toning spots.	£55.00
912.	1905	BMC 2225. F384. S3991. BU Full Lustre, lustre streaky	£45.00
913.	1916	BMC 2291. F395. S4056. Unc good lustre	£35.00
914.	1953	S4155. Unc hints of lustre	£0.50
915.	1959	BMC 2519A. F483. S4158. BU Full Lustre	£8.00
916.	1965	BU Full Lustre	£2.00

FARTHING

917.	1955	BMC 2525. S4159. BU Full Lustre, lightly toning.	£3.00
918.	1955	BU Full Lustre	£4.00
919.	1954	BMC 2523. S4159. BU Almost Full Lustre	£2.00
920.	1954	BU Full Lustre, lightly toning.	£3.00
921.	1954	BU Full Lustre	£4.00
922.	1954	Investment parcel available for this date. All coins are BU Full Lustre. 50 Sparkling Gems. (Spink 2026 £15 BU (each)).	£65.00
923.	1953	(1 + A). BU Full Lustre, lightly toning.	£3.00
924.	1953	(1 + A). BU Full Lustre	£3.50
925.	1953	(2 + B). BMC 2521. S4156. BU Almost Full Lustre	£0.60
926.	1953	(2 + B). BU Full Lustre, lightly toning.	£1.00
927.	1953	(2 + B). BU Full Lustre	£2.00
928.	1952	BMC 2487. S4119. BU Full Lustre, lightly toning.	£3.00

929.	1952	BU Full Lustre	£4.00
930.	1951	BMC 2485. S4119. BU Almost Full Lustre	£3.00
931.	1951	BU Full Lustre, lightly toning.	£4.00
932.	1950	BMC 2483. S4119. BU Full Lustre, lightly toning.	£5.00
933.	1950	BU Full Lustre	£7.00
934.	1948	BMC 2479. S4116. Unc lustre	£2.00
935.	1948	BMC 2479. S4116. BU Full Lustre	£6.00
936.	1947	BMC 2477. S4116. BU Almost Full Lustre	£2.50
937.	1947	BU Full Lustre, lightly toning.	£3.50
938.	1946	BMC 2475. S4116. Unc good lustre	£1.00
939.	1946	BU Almost Full Lustre	£2.50
940.	1946	BU Full Lustre, lightly toning.	£4.00
941.	1945	BMC 2473. S4116. BU Almost Full Lustre	£2.00
942.	1945	BU Full Lustre, lightly toning.	£3.00
943.	1945	BU Full Lustre	£5.00
944.	1943	BMC 2469. S4116. BU Full Lustre, lightly toning.	£3.00
945.	1943	BU Full Lustre	£5.00
946.	1942	BMC 2467. S4116. BU Almost Full Lustre	£2.00
947.	1942	BU Full Lustre, lightly toning.	£3.00
948.	1942	BU Full Lustre, very lightly toning.	£3.50
949.	1942	BU Full Lustre	£5.00
950.	1936	Unc lustre	£2.00
951.	1936	BMC 2363. S4061. Unc lustre/Unc good lustre	£2.50
952.	1936	Unc good lustre	£3.00
953.	1917	BMC 2329. S4059. Black Virtually BU	£6.50
954.	1917	BMC 2329. S4059. Black BU (Spink 2026 Cat value BU £20)	£10.00
955.	1891	NVF/VF	£2.50
956.	1890	BMC 1917. S3958. Choice BU Full Lustre	£95.00
957.	1886	NVF	£0.90
958.	1886	GVF	£2.00
959.	1886	Near EF	£2.25
960.	1886	Unc traces of lustre	£9.00
961.	1886	Unc lustre	£10.00
962.	1886	BMC 1913. S3958. Almost Unc with good lustre	£10.00
963.	1886	Unc good lustre	£15.00

FARTHINGS (CONTINUED)

964.	1886	BU Full Lustre, lightly toning	£32.00
965.	1886	BU Full Lustre, lightly toning	£32.00
966.	1884	A/Unc lustre	£18.00
967.	1878	BMC 1896. S3958. BU Full Lustre, lightly toning.	£75.00
968.	1875H	REG type. Near EF	£12.00
969.	1875H	REG type. BMC 1892. S3959. Unc lustre	£30.00
970.	1875H	REG type. BMC 1892. S3959. Unc good lustre	£45.00
971.	1875H	REG type. BMC 1892. S3959. BU Almost Full Lustre	£80.00
972.	1873	Higher set 3 in date. BMC 1886. S3958. Almost Unc/EF, weak strike	£10.00
973.	1860	Beaded Border. BMC 1854. S3958. BU Almost Full Lustre	£80.00
974.	1846	From a small hoard of around 80 coins, these 1846 are all A/Unc and exhibit some original colour but they all have patchy toning. The appearance is of having been in the back of a fire grate or chimney at some time. They were found recently in Plymouth. For a rare date to turn up as a small hoard like this is indeed a rare event. They come in two varieties: a) with a small, neat 4 in the date and b) with a much larger 4, the result of the 4 being re-cut over a higher 4.	£45.00
975.	1844	Victoria. BMC 1565. S3950. Fair/Near Fine	£50.00
976.	1841	Near VF	£12.00
977.	1839	2 Prongs to Trident. Fine	£10.00
978.	1834	Reverse A (centre lines are incuse). BMC 1470. S3848. EF or better	£40.00

Second Issue Design (1826-1830)

979.	1826	GVF	£10.00
------	------	-----	--------

First Issue Design (1821-1826)

980.	1822	Obverse 2. (lowest 3 leaves incuse central lines). BMC 1411. S3822. Unc with a trace of lustre	£95.00
981.	1821	BMC 1407. S3822. Choice Unc with lustre on both sides.	£115.00

982.	1807	Near VF	£15.00
------	------	---------	--------

GEORGE III CURRENCY 1771-75

983.	1773	Obverse 1. BMC 911. S3775. Near EF	£175.00
984.	1773	Obverse 2. BMC 913. S3775. Choice Uncirculated, fields prooflike with a delightful blue tone.	£275.00
985.	1754	GF	£10.00
986.	1754	S3722. GVF	£45.00
987.	1754	S3722. GVF	£45.00
988.	1749	BMC 889. S3722. GEF with traces of lustre, struck off centre.	£325.00
989.	1739	BMC 869. S3720. EF, toned.	£275.00
990.	1675	BMC 528. S3394. About EF, a hint of lustre. Encapsulated by NGC as AU58 BN (8221495-005)	£595.00
991.	1675	BMC 528. S3394. EF hints of lustre	£695.00
992.	1674	BMC 527. S3394. VF, very rare above Fine.	£250.00
993.	1672	BMC 519. S3394. Near VF	£95.00
994.	1672	BMC 519. S3394. Near VF or better	£110.00

PATTERN FARTHINGS OF CHARLES II

995.	1676	BMC 492. Pattern Farthing in Silver. Plain Edge. 5.90g. EF and probably About As Struck for this issue.	£850.00
------	------	--	---------

Selling Your Coins?

We are always keen to acquire new
material.

If you are contemplating selling any of your
coins, whether it be your whole collection
or just individual pieces or duplicates.

Please do not hesitate to contact to us, we
are always keen to buy new material.

FRACTIONAL FARTHINGS**HALF FARTHINGS**

996. 1839 BMC 1590. S3951.
BU Full Lustre, lightly toning.
Previously encapsulated by PCGS as
MS63RB (200206.63/34733999)
£150.00

THIRD FARTHINGS

997. 1885 BMC 1937. S3960. GEF £15.00
998. 1827 BMC 1453. S3827.
Almost Unc, hints of lustre £125.00
999. 1827 BMC 1453. S3827.
BU Practically Full Lustre, a superb
example. £295.00

QUARTER FARTHINGS

1000. 1839 BMC 1608. S3953.
Choice Uncirculated.
Encapsulated by NGC as MS63 BN
(6769931-005) £225.00

ROYAL MINT PROOF SETS

1001. 1972 Proof Set. Proof 'Silver Wedding'
Crown struck in cupronickel plus
50p to 1/2p. Issued 150,000.
FDC £25.00
1002. 1996 Proof Set. Proof '70th Birthday' £5
struck in cupronickel, 'Football' £2,
'Northern Irish' £1 to 1p.
Issued 46,295.
FDC in blue case. £32.00
1003. 2000 Proof Deluxe Set. Proof 'Millennium'
£5 struck in cupronickel, 'Bimetallic'
£2, 'Welsh' £1, 'Library' 50 pence and
'Britannia' 50 pence to 1p.
Issued 21,573 above. FDC £35.00

DECIMAL ODDMENTS

1004. £5 2006 Her Majesty Queen Elizabeth II
80th Birthday. L16. (Issued: 330,790)
UK £5 Brilliant Uncirculated Coin in
presentation folder. Cupro-nickel.
£12.00

1005. £5 2007 Diamond Wedding Crown.
Her Majesty The Queen.
His Royal Highness Prince Philip. L17.
UK £5 Brilliant Uncirculated Coin in
presentation folder. Cupro-nickel.
(Issued: 260,856). £12.00
1006. £5 2011 Countdown to London 2012.
Cupro-nickel. BU, in presentation
folder. £15.00
1007. £5 2011 Royal Wedding commemorative
HRH Prince William of Wales & Miss
Catherine Middleton 29th April 2011.
L22. Cupro-nickel.
BU, in presentation folder. £18.00
1008. £5 2016 ALDERNEY £5 Poppy.
Remembrance Day. BU £15.00
1009. £5 2022 The Platinum Jubilee of Her
Majesty The Queen. L95. 1952 - 2022
UK £5 Brilliant Uncirculated Coin in
folder. Cupro-nickel. £10.00
1010. £2 1996 European Football
Championships. K7. Unc £5.00
1011. 50p 1969 H1. BU £4.00
1012. 50p 1973 Accession to European
Economic Community. Reverse The
inscription '50 PENCE' and the date of
the year, surrounded by nine hands,
symbolizing the nine members of the
community, clasping one another in a
mutual gesture of trust, assistance
and friendship. H2. BU £3.00
1013. 50p 1976 H1. GEF £2.00
1014. 50p 1980 H1. BU, a couple of minor
bagmarks. £3.00
1015. 50p 1984 H3. BU, a couple of bagmarks,
reverse slightly toned. £3.00
1016. 50p 1994 Silver Proof 50p Coin. H6.
50th Anniversary of the Normandy
Landings on D-Day. Issued 40,000.
Certificate of Authenticity but no
box. FDC £25.00
1017. 50p 2003 Silver Proof 50p Coin. H12.
Centenary of the Suffragette
Movement. Issued 6,267.
Box and certificate. FDC £28.00
1018. 5p 1970 D1. BU £1.00
1019. 1/2p 1971 A1. BU £1.00

Notes

Notes

