

COLIN COOKE



COLIN COOKE LTD

PO BOX 602, ALTRINCHAM, WA14 5UN

TELEPHONE: 0161 927 9524

website: www.colincooke.com email: coins@colincooke.com



AUGUST 2024



Managing Director – Lee Brownson

Callers by appointment only, as coins are not kept on the premises.

Hours of Business: Mon – Sat only. 8.00am. to 4.30pm. (Sat only to 12.00pm.)

Tel - 0161-927-9524

Mobile - 07919447383

E-Mail - coins@colincooke.com

Address - COLIN COOKE LTD, PO BOX 602, ALTRINCHAM, WA14 5UN

LEE BROWNSON will attend to your Telephone/E-mail/Letter orders. Replies can be addressed directly to any of us at the address given on the front cover. Orders will be sent out on full approval before payment to regular clients. Postage will be added to all orders.

Cheques - should be made payable to Colin Cooke Ltd.

Cards – All major Credit and Debit card's accepted.

Bank Transfer - Natwest, Underbank Hall Branch, Stockport

Colin Cooke Ltd, Account No: 54651239, Sort Code: 01-08-38

Note on Email Lists

We are now able to offer this list and all future lists by email in a PDF format. We have always offered this service however in the past it was purely a word document with no pictures. We can now however email a PDF version with all the pictures included in full colour!! If you would like to receive the PDF version in full colour, please send us an email so that we then have your email address on record and we can add you to the email mailing list for future lists.

VISIT OUR WEBSITE

At

www.colincooke.com

Our website has thousands more pictures for you to view and is an invaluable reference for any coin collector.

All coins can be viewed in full colour on our website.

HAMMERED GOLD

1. James I Unite. Second Coinage, 1604-19.
Fifth bust. S2620. N2085.
mm Cinquefoil (1613-1615).
GVF, small striking flaw on obverse.
(illustrated) £2,950.00



2. Charles I Unite.
Tower, Under the King (1625-42).
Group C, third bust, shorter with
heavier armour. Reverse Oval shield
with CR at sides. Class 11a.
Mm Plume (1630-1). Bust 3a. 9.08g.
S2690. Brooker 67-68. N2150.
Some die flaws otherwise
GVF - Near EF (illustrated) £4,950.00



3. Edward IV Ryal or Rose Noble.
N1549. S1951. First Reign, 1461-70.
Light Coinage, 1464-70.
Small trefoils in spandrels.
Mm Crown on reverse only (1466-7).
EF or better, a well struck example,
ever so light reddish tone.
(illustrated) £7,950.00



4. Elizabeth I Gold Half Pound.
First Issue. 5.55g. S2520. N1982.
Mintmark Cross Crosslet (1560-61).
Near EF, slightly weak on portrait.
(illustrated) £7,750.00



5. James I Half Laurel. Third Coinage, 1619-25.
mm Trefoil 1624. S2641A. N2117.
Bold GVF, some parts nearer to EF
(illustrated) £2,750.00



HAMMERED GOLD (CONTINUED)

6. Henry VI Half Noble. London.
Annulet Issue, 1422-c.1430.
First Reign, 1422-61. S1805. N1417.
Sch 293. Mm Lis.
Bold GVF, some parts nearer EF
(**illustrated**) £4,500.00

**MILLED GOLD****SOVEREIGNS**

7. 1821 George IV Sovereign. Laur. Head.
S3800. Choice Virtually Uncirculated,
fields prooflike.
(**illustrated**) £2,950.00

**HALF SOVEREIGNS**

8. 1818 George III Half Sovereign. S3786.
Laur head with date below.
Rx Crowned shield, edge milled.
GEF or better (**illustrated**) £1,150.00



9. 1834 William IV. S3830.
GVF or better, some marks.
(**illustrated**) £1,275.00

**HAMMERED SILVER**

10. 1601 Elizabeth I Crown. S2582. mm 1.
GVF, toned (**illustrated**) £5,950.00



HAMMERED SILVER (CONTINUED)

11. James I Crown. Third Coinage, 1619-25.
S2665. Plume over Shield.
mm Lis 1623-4. King on horseback
with grass ground line.
Bold GVF, some parts better, small
flan crack from strike.
(illustrated) £4,950.00



12. Henry VIII Testoon. Third Coinage, 1544-7.
S2367. Southwark Mint. mm S.
HENRIC 8. Reverse CIVITAS LONDON.
Good Fine, pleasing portrait and
problem free. (illustrated) £1,850.00



13. Henry VI (1422-61) Groat.
Annulet Issue, 1422-30. Calais mint.
Annulets at neck. S1836. N1427.
3.77gm. mm Incurved pierced cross
both sides (1422-7).
VF or better (illustrated) £275.00



14. Mary Groat. (1553-54). mm Pomegranate.
S2492. Bold GVF - Near EF £695.00
15. Aethelred II (978-1016) Penny.
S1148. N770. London Mint.
Moneyer AELFGAR. Crux type.
Bare-headed bust left, with sceptre.
Reverse Voided short cross with
letters C, R, V, X in angles.
About EF, portrait bold. £750.00
16. Cnut Penny.
Short Cross type (c.1029-1035/6).
Aelfwig on Cambridge. S1159.
EF pleasing £695.00
17. Edward the Confessor Penny (1042-1066).
Hammer Cross type (1059-62).
Hastings Mint, BRID Moneyer. 1.15g.
S1182. N828. Choice GEF, As Struck, a
superb example.
Encapsulated by NGC as MS62
(6768362-002) (illus) £1,495.00



18. Elizabeth I Penny. Second Issue, 1560-61.
S2558. Bust 3H. mm Cross Crosslet.
About EF, super portrait, toned.
£375.00
19. Charles I Halfpenny. 1625-42. S2851. 0.22g.
Rose each side, no legend or mm.
About VF, for issue. £85.00

MILLED SILVER**CROWNS**

20. 1673 Charles II. Third dr. bust. V.QVINTO.
S3358. Bold Fine (**illus**) £185.00



21. 1676 Charles II. Third dr. bust. V.OCTAVO.
S3358. GF - Near VF (**illus**) £295.00



22. 1677/6 Charles II. V.NONO. S3358. Bull 399.
ESC 53. Third dr. bust.
GVF to Near EF for issue, attractively
toned. (**illustrated**) £1,950.00



23. 1695 William III. First dr. bust with curved
breast plate or drapery. First harp.
OCTAVO. S3470. Fine (**illus**) £120.00



24. 1696 William III. Third dr. bust with
straight breast plate or drapery.
First harp. OCTAVO. S3472.
GF/Near VF (**illustrated**) £250.00



25. 1703 VIGO Queen Anne Crown.
TERTIO Edge. S3576, Bull 1340,
ESC 99. GVF, lightly toned.
(**illustrated**) £2,750.00



CROWNS (CONTINUED)

26. 1707E Queen Anne. E below bust.
Second dr. bust. SEXTO. S3600.
ESC 1351. Near VF/VF
(illustrated) £550.00



27. 1792 George III Emergency Issue.
Portrait type. S3765A.
Head of George III as an oval
countermark on a Spanish American
8 Reales. Peru, LIMA Mint.
Host coin VF or better, countermark
Near EF.
Ex Spink (ticket enclosed)
(illustrated) £895.00



28. 1818 LVIII. George III. Laur. head. S3787.
GEF attractively toned, two digs to
right of bust and one or two marks
on the reverse. **(illustrated)** £450.00



29. 1819 LIX. S3787. Near EF £350.00
30. 1821 Secundo. George IV. Laur. head.
S3805. ESC 2310 (246). GVF
(illustrated) £175.00



31. 1845 Cinquefoil Stops. VIII. S3882, ESC 282,
Bull 2564. Fine £50.00
32. 1845 Cinquefoil Stops. VIII. Young head.
S3882, ESC 282, Bull 2564.
VF or better, some marks
(illustrated) £225.00



CROWNS (CONTINUED)

33. 1889 Jubilee bust. S3921. EF, minor bruise at 2pm on obverse. **(illus)** £95.00



34. 1893 LVI. S3937. Near EF, some minor marks £125.00

35. 1893 LVI. S3937. GEF, lustrous. **(illustrated)** £225.00



36. 1893 LVI. S3937. ESC 2593 (303). A/Unc £295.00

37. 1895 LIX. S3937. EF **(illustrated)** £225.00



38. 1896 LX. S3937. GEF, lightly brushed. **(illustrated)** £125.00



39. 1897 LXI. S3937. GEF, toned. **(illustrated)** £225.00



40. 1900 LXIV. S3937. EF, obverse cleaned. **(illustrated)** £95.00



41. 1927 Proof Wreath Crown. S4036. Almost FDC £295.00

CROWNS (CONTINUED)

42. 1928 Wreath. S4036. EF, light scratches on face. **(illustrated)** £150.00



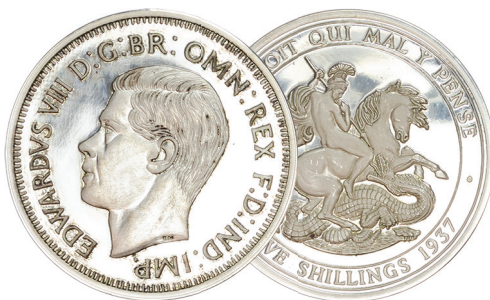
43. 1931 Wreath. S4036. EF, some light scratches. **(illustrated)** £175.00



44. 1933 Wreath. S4036. EF or better **(illustrated)** £325.00



45. 1937 Edward VIII. Pattern by Maklouf. Frosted Silver Proof. Virtually FDC **(illustrated)** £40.00



46. 1937 Proof. S4079. Practically FDC **(illustrated)** £80.00



47. 1953 S4136. BU £8.00
48. 1953 Proof. S4136. Practically FDC **(illustrated)** £80.00



CROWNS (CONTINUED)

49. 1953 Proof. S4136. Practically FDC
(illustrated) £80.00



50. 1953 Proof. S4136. Superb As Struck £150.00
 51. 1965 BU £2.50
 52. 1972 BU £1.50
 53. 1977 BU £1.50
 54. 1981 BU £2.00

DOUBLE FLORINS

55. 1887 Arabic 1. S3923. Virtually BU, prooflike fields
(illustrated) £145.00



56. 1888 S3923. Virtually BU, underlying brilliance. (illustrated) £225.00

**HALFCROWNS**

57. 1685 James II. First laur and dr. bust. PRIMO. S3408. GF (illus) £250.00



58. 1689 William & Mary. First busts. First crowned shield. PRIMO. Crown with caul and interior frosted, with pearls. S3434. GVF (illustrated) £425.00



HALFCROWNS (CONTINUED)

59. 1698 William III. First dr. bust.
Modified large shields. DECIMO.
S3494. ESC 554. Near VF
(**illustrated**) £195.00



60. 1710 Queen Anne. Roses & Plumes in
angles. NONO. S3607.
GF/Near VF (**illustrated**) £225.00



61. 1746 George II. LIMA below bust. D.NONO.
S3695A. ESC 606. GF - Near VF
(**illustrated**) £125.00



62. 1746 George II. LIMA below bust. D.NONO.
S3695A. ESC 606.
Near VF, lightly brushed.
(**illustrated**) £150.00



63. 1817 George III. Small Head. S3789.
ESC 618. EF, couple of digs in
obverse field. (**illustrated**) £175.00



64. 1817 George III. Large Head. S3788.
ESC 616. Almost BU, toned
(**illustrated**) £550.00



HALFCROWNS (CONTINUED)

65. 1820 George III. S3807. ESC 628.
EF, some marks (**illustrated**) £225.00



66. 1823 George IV. Laur Head. 2nd Reverse.
S3808. ESC 634. Near VF
(**illustrated**) £75.00



67. 1834 William IV. WW in script. S3834.
ESC 662. Bull 2478.
GEF, light tone. (**illustrated**) £495.00



68. 1834 William IV. WW in script. S3834.
ESC 662. Bull 2478. Almost BU,
light tone, light flaw on truncation.
£695.00

69. 1842 S3888. ESC 675. Bull 2717.
Almost BU, lustrous
(**illustrated**) £1,250.00



70. 1887 JH. S3924. GEF, some minor
marks £50.00
71. 1899 S3938. Almost BU, light golden
tone. (**illustrated**) £175.00



72. 1901 S3938. About Unc, toned.
(**illustrated**) £145.00



HALFCROWNS (CONTINUED)

73. 1902 Edward VII Matt Proof. S3980.
Virtually As Struck, lightly toned
(illustrated) £225.00



74. 1904 S3980. A/Unc, extremely rare
(illustrated) £1,250.00



75. 1906 Edward VII. S3980. Near EF
(illustrated) £195.00



76. 1906 Edward VII. S3980.
Almost BU, lightly toned. £525.00

77. 1910 Edward VII. S3980.
EF, lustrous (illustrated) £225.00



78. 1911 S4011. Almost BU (illus) £195.00



79. 1913 S4011. GEF/Almost BU
(illustrated) £225.00



80. 1914 S4011. GEF/Almost BU
(illustrated) £65.00



HALFCROWNS (CONTINUED)

81. 1915 S4011. Choice Virtually BU
(**illustrated**) £80.00



82. 1916 S4011. EF/GEF (**illustrated**) £40.00



83. 1917 S4011. GEF/Almost BU (**illus**) £75.00



84. 1918 S4011. Near EF (**illustrated**) £30.00



85. 1919 S4011. Almost BU (**illus**) £115.00



86. 1923 S4021A. GEF/Almost BU (**illus**) £60.00



87. 1924 S4021A. Almost BU (**illus**) £135.00



88. 1925 S4021A. VF (**illustrated**) £75.00



HALFCROWNS (CONTINUED)

89. 1927 Proof. S4037. As Struck, light tone. £140.00
 90. 1927 Proof. S4037. Superb As Struck £175.00
 91. 1928 S4037. GEF £22.00
 92. 1929 S4037. GEF £25.00
 93. 1930 S4037. Near EF (**illustrated**) £225.00



94. 1932 S4037. Almost BU £70.00
 95. 1933 S4037. Almost BU (**illus**) £60.00



96. 1933 S4037. Choice Virtually BU £70.00
 97. 1934 S4037. Almost BU, lightly toned. (£175.00)
 (**illustrated**)



98. 1935 S4037. Almost BU £30.00
 99. 1937 Edward VIII. Pattern by Maklouf. Frosted Silver Proof. Virtually FDC. (**illustrated**) £40.00



100. 1948 Almost BU £6.00
 101. 1950 GEF £8.00
 102. 1950 Almost BU £15.00
 103. 1953 Proof. S4137. ESC 798H. Davies 2311 (Dies 2+A). 'I' of 'DEI' to bead. Almost FDC £20.00
 104. -- -- -- -- -- Practically FDC (**illustrated**) £25.00



105. 1965 Almost BU £3.50
 106. 1965 BU £5.00
 107. 1967 BU £3.00
 108. 1970 Proof. S4145. ESC 798Y. Davies 2339 (Dies 3C). 'I' of 'Gratia' right of bead. FDC £10.00

Selling Your Coins?

We are always keen to acquire new material.

If you are contemplating selling any of your coins, whether it be your whole collection or just individual pieces or duplicates.

Please do not hesitate to contact us, we

BANK TOKENS**THREE SHILLINGS**

109. 1811 George III Three Shillings. S3769.
Draped and Laureate Bust in armour.
GEF or better with brilliance. Some
scratches on R of REX
(**illustrated**) £175.00



110. 1814 George III Three Shillings.
Laureate head. S3770. EF
(**illustrated**) £225.00

**EIGHTEENPENCE**

111. 1811 George III Eighteenpence (1s 6d).
Draped and Laureate Bust in armour.
S3771. GEF, toned. (**illus**) £175.00



112. 1812 George III Eighteenpence (1s 6d).
Draped and Laureate Bust in armour.
S3771. EF (**illustrated**) £145.00



113. 1812 George III Eighteenpence (1s 6d).
Laureate head. S3772.
Choice GEF, small mark under N of
TOKEN. (**illustrated**) £125.00

**MILLED SILVER****FLORINS**

114. 1871 Gothic. S3893. Die No 29.
Near EF (**illustrated**) £225.00



115. 1872 Gothic. S3893. Die No 44.
Near Fine £15.00

FLORINS (CONTINUED)

116. 1886 Gothic. S3900. GEF (**illus**) £295.00



117. 1887 JH. S3925. Almost BU, toned £65.00
 118. 1887 JH. S3925. Almost BU, toned £65.00
 119. 1887 JH. S3925. Almost BU, toned £65.00
 120. 1900 S3939. Almost BU, couple of minor marks £150.00
 121. 1900 S3939. Virtually BU, delightfully toned. (**illustrated**) £175.00



122. 1901 S3939. Near EF/EF (**illus**) £50.00



123. 1903 Edward VII. S3981. Near EF (**illustrated**) £125.00



124. 1904 Edward VII. S3981. GVF (**illus**) £70.00



125. 1909 Edward VII. S3981. EF, toned. (**illustrated**) £250.00



126. 1911 S4012. GEF/Almost BU (**illus**) £95.00



127. 1922 S4022A. Near EF £30.00
 128. 1922 S4022A. GEF £50.00
 129. 1926 S4022A. Almost BU £125.00
 130. 1927 Proof. S4038. As Struck, lightly toned £150.00
 131. 1929 S4038. GEF (**illustrated**) £20.00



FLORINS (CONTINUED)

132. 1932 Key Date. S4038. GF/Near VF
(**illustrated**) £30.00



133. 1937 Edward VIII Pattern by Maklouf.
Frosted Silver Proof.
Practically FDC. (**illustrated**) £55.00



134. 1937 S4081. Almost BU £20.00
135. 1937 S4081. Virtually BU, some minor
marks £24.00
136. 1937 Proof. S4081. FDC, bluey, purple
toning. (**illustrated**) £35.00



137. 1938 S4081. Virtually BU £35.00
138. 1939 S4081. GEF £8.00
139. 1940 S4081. Almost BU £20.00
140. 1945 S4081. GEF £8.00
141. 1948 Almost BU £8.00

142. 1953 Proof. S4138. FDC, lightly toning
from the box on obverse.
(**illustrated**) £30.00



143. 1953 Proof. S4138. FDC (**illus**) £40.00



144. 1965 Virtually BU £1.50
145. 1965 BU £3.00
146. 1966 BU £3.00
147. 1967 BU £1.25

SHILLINGS

148. 1668 Charles II. Second bust. S3375.
ESC 1030. Bold GF or better
(**illustrated**) £195.00



SHILLINGS (CONTINUED)

149. 1693 William & Mary. S3437. ESC 1076.
Conjoined bust. VF for issue, toned
(**illustrated**) £695.00



150. 1697 William III. First bust. S3497.
ESC 1091. Near EF, reverse better
(**illustrated**) £295.00



151. 1723 George I. 1st Bust. SSC in angles.
S3647. ESC 1176.
Choice Virtually Mint State
(**illustrated**) £450.00



152. 1750 George II. Old Head. Plain in angles.
Wide 0 in date. S3704. ESC 1211.
GVF - Near EF, toned (**illus**) £350.00



153. 1817 George III. Laur head. S3790.
Near EF, toned (**illustrated**) £50.00



154. 1826 George IV. S3812.
GEF, light tone. (**illustrated**) £150.00



155. 1834 William III. S3835.
EF or better (**illustrated**) £225.00



156. 1846 S3904. Choice Almost BU, attractively
toned with underlying mint brilliance.
£350.00

157. 1853 S3904. Choice Practically Mint State,
light gold tone with much brilliance.
£350.00

158. 1861 S3904. GVF+/Near EF (**illus**) £75.00



SHILLINGS (CONTINUED)

159. 1874 S3906A. Die Number 41.
Almost BU (**illustrated**) £275.00



160. 1884 Choice Almost BU, small mark on neck. £165.00
161. 1887 JH. Rev. C. S3926. GEF, toned £18.00
162. 1889 Large Jubilee head. S3927.
Virtually BU, toned. (£**illus**) £95.00



163. 1890 GEF £70.00
164. 1893 Old Head. ESC 1361A. S3940.
Smaller Lettering on Obverse.
Choice Virtually BU, exquisite blue,
olive toning. £115.00
165. 1902 S3982. Choice GEF or better £75.00
166. 1902 S3982. Virtually BU, olive blue
toning. £105.00
167. 1906 Edward VII. S3982.
Choice GEF or better (**illus**) £90.00



168. 1910 S3982. EF £75.00
169. 1911 S4013. Almost BU £65.00

170. 1911 S4013. Almost BU (**illus**) £65.00



171. 1911 S4013. Choice Virtually Mint State,
light attractive toning. £80.00
172. 1916 S4013. Virtually BU (**illus**) £55.00



173. 1922 S4023A. Virtually BU (**illus**) £95.00



174. 1925 S4023A. GEF/Almost BU (**illus**) £95.00



175. 1926 Modified effigy. S4033.
Virtually BU (**illustrated**) £60.00



SHILLINGS (CONTINUED)

176. 1929 S4039. Virtually BU £45.00
 177. 1930 S4039. Near VF £10.00
 178. 1933 S4039. Virtually BU £50.00
 179. 1933 S4039. BU, toned (**illus**) £60.00



180. 1935 S4039. Virtually BU £45.00
 181. 1937 Edward VIII. Pattern by Maklouf. Frosted Silver Proof. FDC. (**illustrated**) £35.00



182. 1937E Proof. S4082. FDC (**illus**) £35.00



183. 1937S Proof. S4083. FDC (**illus**) £35.00



184. 1940S Virtually BU £25.00
 185. 1941E Choice BU £25.00
 186. 1943S Virtually BU £20.00
 187. 1944E Almost BU £15.00
 188. 1944E BU, minor marks £18.00
 189. 1946E Virtually BU £12.00

190. 1948E Almost BU £8.00
 191. 1948S Almost BU £8.00
 192. 1949E S4108. GEF, scarce £8.00
 193. 1949S Almost BU £20.00
 194. 1949S BU £30.00
 195. 1953E Proof. S4139. FDC £20.00
 196. 1953E Proof. S4139. FDC £20.00
 197. 1953E Proof. S4139. FDC (**illus**) £20.00



198. 1953S BU £6.00
 199. 1953S Proof. S4140. FDC £20.00
 200. 1953S Proof. S4140. FDC (**illus**) £20.00



201. 1955E BU £8.00
 202. 1959S VF £1.00
 203. 1959S GFV £2.00
 204. 1965E BU £2.00
 205. 1966E BU £2.00
 206. 1966S BU £2.00

SIXPENCES

207. 1711 Queen Anne. Angles plain. S3619. ESC 1596A. Larger Lis in arms (2.6mm. high). 5 Strings. VF or better (**illustrated**) £110.00



SIXPENCES (CONTINUED)

208. 1825 Laur. Head. S3814. Choice Virtually Mint State, attractively toned. £395.00
209. 1829 George IV. S3815. EF (**illus**) £150.00



210. 1831 EF or better, toned £115.00
211. 1839 S3908. Almost BU, toned £275.00
212. 1877 Die Number 32. A/Unc toned £175.00
213. 1881 S3912. EF £95.00
214. 1883 S3912. GEF, delightfully toned. £125.00
215. 1886 S3912. Almost BU, attractively toned. £150.00
216. 1887 JH. Withdrawn. S3928. Virtually BU, toned. £35.00
217. 1887 YH. S3912. A/Unc toned £110.00
218. 1887 YH. S3912. Almost BU, light golden tone £125.00
219. 1887 YH. S3912. Virtually BU attractively toned. £140.00
220. 1888 S3929. Choice Practically Mint State, toned £85.00
221. 1889 S3929. Choice Practically Mint State, toned. £85.00
222. 1890 S3929. Almost BU, toned £85.00
223. 1893 OH. S3941. GEF £45.00
224. 1893 OH. S3941. Virtually BU, toned £75.00
225. 1896 S3941. Old veiled bust. Choice Practically Mint State, attractively toned. £95.00
226. 1897 S3941. Old veiled bust. Choice Practically Mint State, attractively toned. £95.00
227. 1898 S3941. Old veiled bust. Choice Practically Mint State, attractive blue olive toning. £95.00
228. 1899 S3941. Old veiled bust. Choice Virtually BU, attractively toned. £95.00
229. 1900 S3941. Old veiled bust. Virtually BU, olive toning. £85.00

230. 1901 S3941. Old veiled bust. Almost BU £60.00
231. 1910 S3983. Bare head. GEF toned £55.00
232. 1910 S3983. Bare head. GEF, lustrous (**illustrated**) £55.00



233. 1910 S3983. Bare head. Choice Virtually BU, toned £80.00
234. 1911 S4014. Almost BU (**illus**) £45.00



235. 1911 S4014. Virtually Mint State, light attractive tone. £55.00
236. 1927 Proof. S4040. As Struck £80.00
237. 1928 S4040. EF £10.00
238. 1936 GEF £10.00
239. 1936 Almost BU £16.00
240. 1937 Edward VIII. Pattern by Maklouf. Silver Frosted Proof. Superb FDC. (**illustrated**) £30.00



241. 1937 Proof. S4084. Superb As Struck, attractive tone. £25.00
242. 1937 Proof. S4084. Superb As Struck £25.00

SIXPENCES (CONTINUED)

243. 1937 Proof. S4084. FDC (**illus**) £25.00



244. 1938 S4084. BU £22.00
 245. 1953 Proof. S4141. FDC £20.00
 246. 1953 Proof. S4141. FDC (**illus**) £20.00



247. 1965 BU £2.00
 248. 1967 BU £1.00

SILVER THREEPENCES

249. 1887 JH. S3931. Virtually As Struck, toned £30.00
 250. 1887 JH. S3931. Virtually As Struck, toned. Lovely blue, orange tone on reverse. £30.00
 251. 1893 OH. S3942. Virtually BU, lustrous. £50.00
 252. 1893 OH. S3942. Virtually BU, toned £50.00
 253. 1901 S3942. Almost BU, toned £35.00
 254. 1901 S3942. Almost BU, toned £35.00
 255. 1902 S3984. Virtually BU, toned. £35.00
 256. 1902 S3984. BU, attractively toned £40.00
 257. 1902 Matt Proof. S3984. As Struck £50.00
 258. 1908 Fine £1.25
 259. 1908 S3984. Virtually BU £50.00
 260. 1913 S4015. Virtually BU, toned £30.00
 261. 1927 Proof. S4042. Superb As Struck, toned. £150.00

262. 1937 Edward VIII. Pattern by Maklouf. Reverse with ER monogram. Frosted Silver Proof. Superb FDC (**illustrated**) £20.00



263. 1937 Edward VIII. Pattern by Maklouf. Reverse with thrift plant. Frosted Silver Proof. Superb FDC (**illustrated**) £25.00



264. 1937 Proof. S4085. As Struck, toned £18.00
 265. 1937 Proof. S4085. As Struck, lustrous. £18.00
 266. 1937 Proof. S4085. FDC (**illus**) £18.00



267. 1940 S4085. BU £25.00
 268. 1942 S4085. BU £45.00
 269. 1943 S4085. BU £55.00

GROATS

270. 1836 GEF, toned (**illustrated**) £85.00



271. 1845 OFF STRIKE ERROR. Plain Edge. EF, toned and extremely rare £425.00

BRASS THREEPENCES

272. 1937 Proof. S4112. FDC (illus) £20.00



273. 1946 Fine, rare £6.00

274. 1946 GF, rare £8.00

275. 1949 Fine £5.00

276. 1953 BU Full Lustre £4.00

277. 1953 Proof. S4152. FDC, lightly toning. £15.00

278. 1953 Proof. S4152. FDC, lightly toning. (illustrated) £15.00



279. 1965 BU Full Lustre £4.00

280. 1967 BU Full Lustre £2.00

281. 1970 Proof. FDC £5.00

MAUNDY ODDMENTS

282. 4d 1835 William IV. S3841. As Struck £75.00

283. 4d 1845 S3917. EF, lightly brushed. (illustrated) £20.00



284. 4d 1851 Victoria. S3917. As Struck, toned £45.00

285. 4d 1864 Victoria. S3917. Virtually FDC £40.00

286. 4d 1869 Victoria. S3917. Virtually FDC, toned. £40.00

287. 4d 1902 Edward VII Matt Proof. S3986. As Struck £35.00

288. 4d 1904 Edward VII. S3986. Unc, toned (illustrated) £45.00



289. 4d 1905 Edward VII. S3986. Unc, toned £30.00

290. 4d 1935 George V. S4044. As Struck, toned. £35.00

291. 3d 1887 Victoria. Young Head. S3918. Virtually FDC, toned. £40.00

292. 2d 1840 Victoria. S3919. As Struck, toned. £40.00

293. 2d 1904 Edward VII. S3988. Unc, toned (illustrated) £40.00



294. 2d 1905 Edward VII. S3988. As Struck, toned £35.00

295. 2d 1911 George V. S4019. As Struck, delightfully toned. £40.00

296. 2d 1922 George V. S4030. As Struck £40.00

297. 2d 1952 George VI. S4099. As Struck, toned and a rarer date. £45.00

298. 2d 1968 Elizabeth II. S4134. As Struck £40.00

299. 2d 1968 Elizabeth II. S4134. As Struck £40.00

300. 1d 1772 George III. S3759. GEF toned £75.00

301. 1d 1792 George III. S3760. 'Wire Money'. GEF £95.00

302. 1d 1800 George III. S3761. GEF £65.00

303. 1d 1820 George III. S3796. As Struck, toned. £75.00

304. 1d 1822 George IV. S3821. As Struck, toned. £60.00

305. 1d 1823 George IV. S3821. As Struck, toned. £60.00

306. 1d 1827 George IV. S3821. GEF, toned. £50.00

MAUNDY ODDMENTS (CONTINUED)

307. 1d 1829 George IV. S3821.
As Struck, toned. £60.00
308. 1d 1834 William III. S3844.
About As Struck, toned. £65.00
309. 1d 1835 William III. S3844.
GEF toned £50.00
310. 1d 1837 William III. S3844.
About As Struck £65.00
311. 1d 1844 Victoria. S3920.
About As Struck, toned. £45.00
312. 1d 1845 Victoria. S3920.
About As Struck, toned. £45.00
313. 1d 1866 Victoria. S3920.
As Struck, toned. £50.00
314. 1d 1871 Victoria. S3920.
As Struck, toned. £50.00
315. 1d 1892 Victoria. S3936.
As Struck, toned. £40.00
316. 1d 1892 Victoria. S3936.
Superb As Struck £45.00
317. 1d 1904 Edward VII. S3989.
Unc, toned (**illustrated**) £35.00

**MAUNDY SETS**

318. 1867 Victoria Maundy Set. S3916.
EF-Unc, toned £295.00
319. 1873 Victoria Maundy Set. S3916.
Almost Unc - Unc lustrous and
delightfully toned. (**illus**) £265.00



320. 1908 Edward VII Maundy Set. S3985.
About As Struck, toned. £195.00

321. 1911 George V Maundy Set. S4016.
Almost FDC, exquisite blue toning.
(**illustrated**) £175.00



322. 1935 George V Maundy Set. S4043.
Almost FDC (**illustrated**) £165.00



323. 1937 George VI Maundy Set. Proof.
S4086. FDC (**illustrated**) £175.00

**Selling Your Coins?**

We are always keen to acquire new material.

If you are contemplating selling any of your coins, whether it be your whole collection or just individual pieces or duplicates.

Please do not hesitate to contact us, we

CORONATION MEDALS

324. 1630 Charles I Silver Medal.
Birth of Prince Charles 29th May.
24mm. (Mli 254/36). Eimer 116.
EF, toned
Ex Baldwins Dec 2011 £195
(tickets enclosed) £295.00
325. 1766 William Pitt Bronze Medal by Pingo.
Rare 1766 'Re Deal of the Stamp Act'.
Eimer 718. As Struck £495.00

IRELAND

326. 1805 Ireland George III Gilt Proof Penny.
S6620. Ever so lightly handling marks
otherwise About As Struck £750.00
327. 1940 Ireland Penny. S6643. About EF
Slabbed by PCGS as AU55 £45.00

PAPER ENVELOPES

328. 2 inch square, acid-free, white paper
envelopes, with flaps, exactly as we
ourselves use every day for storage
and for sending coins to you.
Ideal for storage and writing on.
Per 100. (Subject to VAT to be added
at the standard rate 20%). £3.00
329. As above, per 500. (Subject to VAT
at the standard rate of 20%) £11.50
330. As above, Boxed 1000. (Subject to VAT at
the standard rate of 20%) £19.00

PENNIES

331. 1797 Cartwheel Penny. BMC 1132. S3777.
10 leaves. GEF with hints of lustre on
both sides. Some toning on portrait.
(illustrated) £245.00



332. 1797 Copper Proof Penny. BMC 1123.
As Struck, delightful light blue/orange
toning. Very scarce £895.00
333. 1797 Bronzed Proof. BMC 1122.
As Struck, exquisite blue, purple, gold
toning. Very Scarce £895.00
334. 1797 Bronzed Proof. BMC 1118.
Virtually As Struck, pleasing and very
scarce £795.00
335. 1806 No Incuse Hair Curl. BMC 1343.
S3780. A/Unc with hints of lustre
£165.00
336. 1806 Incuse Hair Curl. BMC 1342. S3780.
GEF, a few scratches in the fields
£125.00
337. 1807 George III. BMC 1344. S3780.
About EF £85.00
338. 1841 No Colon after REG. BMC 1484.
S3948. EF, slight edge bruise at 11pm
on obverse. £60.00
339. 1841 No Colon after REG. BMC 1484.
A/Unc traces of lustre £150.00
340. 1848 BMC 1496. S3948.
GEF with a hint of lustre on both
sides.
Encapsulated by PCGS as AU58
(202361.58/03847488)
(illustrated) £195.00



PENNIES (CONTINUED)

341. 1848 BMC 1496. S3948.
About Uncirculated with traces of
lustre and glossy prooflike fields.
(illustrated) £225.00



342. 1853 P.T. About EF, some edge nicks,
rare £75.00
343. 1853 O.T. Close Colon. EF £80.00
344. -- -- --. Unc traces of lustre £175.00
345. -- -- --. Choice Uncirculated £175.00
346. 1854 O.T. BMC 1507. S3948. Far Colon.
A/Unc with hints of lustre
Wrongly Encapsulated as Plain
Trident in an old NGC holder as
MS61 BN (576770-005)
(illustrated) £125.00



347. 1854 O.T. BMC 1507. S3948. Far Colon.
Choice Unc traces of lustre both
sides. £165.00
348. 1854 P.T. BMC 1506. S3948. Near Colon.
Choice Unc toned. £160.00
349. 1854/3 4 over 3 in date. Plain Trident.
BMC 1505. S3948. GF £125.00

350. 1858 O.T. No WW. BMC 1518. S3948.
Unc, toned. **(illustrated)** £150.00



351. 1858 O.T. No WW. F struck over B in DEF.
GVF £150.00
352. 1858/7 Near EF £80.00
353. 1858/7 BMC 1516. S3948.
Almost Unc with lustre, one or two
toning spots on obverse. £165.00
354. 1860 TB. BMC 1629 F10. Dies 2+D. S3954.
BU Full Lustre, lightly streaky tone.
£200.00
355. 1861 S3954. GEF, toned. **(illus)** £85.00



356. 1864 Crosslet 4. BMC 1663. F48 Dies 6+G.
Fair £15.00
357. 1873 BMC 1689. F64. Dies 6+G. S3954.
Gouby BP1873A J+G.
Uncirculated with good lustre on
both sides. **(illustrated)** £250.00



PENNIES (CONTINUED)

358. 1874H BMC 1696. F71. Dies 7+G. S3955.
A/Unc with traces of lustre
(**illustrated**) £150.00



359. 1875 BMC 1703. F82. Dies 8+J. S3954.
A/Unc with lustre on both sides.
(**illustrated**) £125.00



360. 1876H BMC 1708. F89. Dies 8+K. S3955.
A/Unc hints of lustre (**illus**) £150.00



361. 1876H BMC 1708. F89. Dies 8+K. S3955.
A/Unc with traces of lustre on both
sides. £150.00
362. 1877 BMC 1709. F91. Dies 8+J. S3954.
Unc traces of lustre £150.00

363. 1884 BMC 1733. F119. Dies 12+N. S3954.
BU Full Lustre, toning on the obverse.
(**illustrated**) £150.00



364. 1888 BMC 1740. F126. Dies 12+N.
Gouby A. S3954.
GEF, toned/burnished £50.00
365. 1888 BMC 1740. F126. Dies 12+N. S3954.
A/Unc with good lustre on both
sides. (**illustrated**) £95.00



366. 1890 BMC 1742. F130. Dies 12+N. S3954.
BU Full Lustre, lightly toning. £195.00
367. 1891 BMC 1744. F132. Dies 12+N. S3954.
BU Almost Full Lustre £150.00
368. 1891 BMC 1744. F132. Dies 12+N. S3954.
BU Full Lustre, lightly toning £195.00
369. 1891 BMC 1744. F132. Dies 12+N. S3954.
BU Full Lustre, lightly toning £195.00
370. 1892 Fair £1.00
371. 1895 BMC 1941. F141. S3961.
BU Full Lustre, lightly toning, couple
of toning marks. £70.00

PENNIES (CONTINUED)

372. 1895 BMC 1941. F141. S3961.
BU Almost Full Lustre (**illus**) £70.00



373. 1895 BMC 1941. F141. S3961.
BU Full Lustre, lightly toning
(**illustrated**) £85.00



374. 1896 BMC 1942. F143. Dies 1+B. S3961.
Unc good lustre (**illustrated**) £35.00



375. 1897 BMC 1943. F145. S3961.
BU Almost Full Lustre £65.00

376. 1897 BMC 1943. F145. S3961.
BU Full Lustre, lightly toning.
(**illustrated**) £75.00



377. 1898 BMC 1944. F149. S3961.
Unc good lustre £50.00

378. 1898 BMC 1944. F149. S3961.
Unc good lustre (**illustrated**) £50.00



379. 1898 BMC 1944. F149. S3961.
BU Full Lustre, lightly toning. £75.00

380. 1899 BMC 1945. F150. Dies 1+B. S3961.
BU Almost Full Lustre £65.00

381. 1899 BMC 1945. F150. Dies 1+B. S3961.
BU Almost Full Lustre (**illus**) £65.00



382. 1900 BMC 1947. F153. S3961.
Unc good lustre £30.00

PENNIES (CONTINUED)

383. 1900 BMC 1947. F153. S3961.
BU Almost Full Lustre (**illus**) £35.00



384. 1901 BMC 1948. F154. S3961.
Unc with traces of lustre £10.00
385. 1901 BMC 1948. F154. S3961.
Unc good lustre or better £20.00
386. 1901 BMC 1948. F154. S3961.
BU Almost Full Lustre £40.00
387. 1902 S3990. A/Unc with hints of lustre
on both sides. £20.00
388. 1902 S3990. Unc good lustre £30.00
389. 1902 S3990. Unc good lustre £30.00
390. 1902 S3990. BU Almost Full Lustre
(**illustrated**) £35.00



391. 1902 S3990. BU Full Lustre, lightly toning
£45.00
392. 1902 Low Tide. BMC 2205. F156. Dies 1+A.
S3990A. '2' has wavy base line.
Unc good lustre £195.00

393. 1903 Normal 3. BMC 2208. F158. Dies 1+B.
S3990. GEF, some lustre
(**illustrated**) £35.00



394. 1904 BMC 2209. F159. S3990.
A/Unc with traces of lustre
(**illustrated**) £45.00



395. 1905 BMC 2211. F161. S3990.
EF, traces of lustre (**illus**) £30.00



396. 1906 BMC 2212. F162. S3990.
GEF, toned. £20.00

PENNIES (CONTINUED)

397. 1907 BMC 2213. F163. S3990.
BU Almost Full Lustre (**illus**) £75.00



398. 1908 BMC 2216. F165. S3990.
A/Unc with good lustre on both sides. (**illustrated**) £65.00



399. 1909 BMC 2218. F168. S3990.
BU Full Lustre, lightly toning
(**illustrated**) £95.00



400. 1910 BMC 2219. F170. S3990.
Unc good lustre (**illustrated**) £40.00



401. 1910 BU Almost Full Lustre/Unc good
lustre £65.00
402. 1910 BMC 2219. F170. S3990.
BU Full Lustre, toned on the obverse.
£65.00
403. 1912 H. Fine £2.00
404. 1918 KN. Near Fine - Fine £2.50
405. 1918 KN. Fine £3.50
406. 1919 BMC 2255. F185. S4051.
BU Almost Full Lustre (**illus**) £45.00



407. 1919 BMC 2255. F185. S4051.
BU Full Lustre, lightly toned. £50.00
408. 1920 BMC 2258. F188. S4051.
Unc lustre £25.00
409. 1921 S4051. Unc lustre £30.00
410. 1926 ME. BMC 2265. F195. Dies 4+B.
Gouby B. S4054. Near Fine £15.00
411. 1926 OE. BMC 2263. F193. S4051.
BU Almost Full Lustre (**illus**) £95.00



412. 1927 BMC 2267. F197. Dies 4+C.
BU Full Lustre, lightly toning. £35.00
413. 1930 S4055. Unc good lustre, toned on
the reverse. £25.00
414. 1930 BMC 2273. F203. S4055.
BU Full Lustre, lightly toning. £50.00

PENNIES (CONTINUED)

415. 1930 BMC 2273. F203. S4055.
BU Full Lustre, lightly toning.
(illustrated) £50.00



416. 1935 (BMC 2282A. F212 Dies 5+C. S4055).
Untoned. Unc good lustre or better
£12.00
417. 1936 (BMC 2359. F214 Dies 5+C. S4055).
BU Full Lustre, lightly toning. £24.00
418. -- -- . -- . -- . BU Full Lustre, lightly
toning. £24.00
419. -- -- . -- . -- . BU Full Lustre £30.00
420. 1937 Bronze Proof. (BMC 2401. F218 (R8)
Dies 1+A. S4114). The right vertical
limb of the second N of PENNY points
directly to a border tooth.
Virtually FDC, toned (illus) £18.00



421. 1948 (BMC 2416. F236 Dies 2+C. S4114).
BU Full Lustre £12.00
422. 1953 Bronze Proof. (BMC 2503. F246
Dies 1+B). GEF/About FDC £15.00
423. -- -- . -- . -- . Virtually FDC, purple,
bluey toning on both sides.
(illustrated) £25.00



424. 1965 (F255 Dies 3+H. S4157).
BU Full Lustre £2.00
425. 1966 (F256 Dies 3+I. S4157).
BU Full Lustre, lightly toning. £1.00
426. 1967 (F257 Dies 3+J. S4157).
BU Full Lustre, lightly toning £1.00
427. -- -- . -- . -- . BU Full Lustre £1.50

HALFPENNIES

428. 1694 William & Mary. BMC 602.
VF overall but portrait bold and
better. Some pitting. £225.00
429. 1720 George I Mis Strick Error.
BMC 795. Fine £120.00
430. 1745 George II. BMC 875. S3718.
Near EF £175.00
431. 1746 EF but struck from a rusty die £95.00
432. 1754 George II. BMC 884. S3719.
Near EF £175.00
433. 1770 George III. Reverse A. BMC 893.
S3774. EF £195.00
434. 1772 George III. BMC 899. S3774.
Reverse A. VF £50.00
435. 1774 George III. BMC 907. S3774.
Reverse C. Near EF £150.00
436. 1774 George III. BMC 907. S3774.
Reverse C. GEF traces of lustre
£295.00
437. 1775 George III. BMC 917. S3774.
Choice GEF light blue tone, some
minor marks. £250.00
438. 1799 George III. BMC 1249. S3778.
6 Relief gunports on ship.
Choice Uncirculated with traces of
lustre £150.00
439. 1806 S3781. Reverse No Berries. VF £10.00
440. 1806 George III Bronzed Proof. BMC 1370.
As Struck, some toning spots £225.00
441. 1806 George III Bronzed Proof. BMC 1370.
KH 42. Selig 1405. As Struck, couple
of very minor marks £395.00
442. 1806 George III Bronzed Proof. BMC 1363.
Superb As Struck, small toning spot
on obverse £350.00
443. 1806 George III Bronzed Proof. BMC 1363.
Pleasing As Struck, some original
colour £450.00

HALFPENNIES (CONTINUED)

444. 1826 Reverse A. BMC 1433. S3824.
A/Unc with hints of lustre
(illustrated) £150.00



445. 1827 Near EF £90.00
446. 1827 GEF or better £125.00
447. 1841 BMC 1524. S3949.
Broken shamrock stem - '4' between
beads 7 and 8 - '1' to 11.
Choice A/Unc £95.00
448. 1841 Choice A/Unc with lustre on both
sides. £95.00
449. 1841 BMC 1524. S3949.
Broken shamrock stem - '4' right of
7th bead and tilted right - '1' right of
11. Choice Unc traces of lustre
£125.00
450. 1841 Inverted die Axis. GVF, some marks
and a light stain but very rare £125.00
451. 1853 BMC 1539. S3949. Dots on shield.
GEF (illustrated) £45.00



452. 1853 BMC 1539. S3949. Dots on shield.
A/Unc toned £60.00
453. 1853 5 over 5 in date. BMC 1539. S3949.
Italic 5. A/Unc cleaned. £50.00
454. 1853/2 BMC 1538. Unc traces of lustre
£175.00
455. 1854 BMC 1542. S3949. EF £45.00
456. 1854 V/A in Victoria. GEF or better, toned
£140.00

457. 1856 BMC 1544. S3949.
Obverse date and legend double
struck. Near EF, hints of lustre £75.00
458. 1857 BMC 1546. S3949. Reverse A.
EF, scratches in the reverse fields.
(illustrated) £30.00



459. 1858 BMC 1549. S3949. GEF (illus) £55.00



460. 1860 Beaded Border. 1+A. BMC 1750.
F258 (R8). S3956.
BU Almost Full Lustre (illus) £125.00



461. 1860 Toothed Border. 2+B. BMC 1754.
F261 (R12). 14 leaves & 7 berries.
Choice Unc good lustre, very rare
Previously slabbed by LCGS 80
(ticket attached) (illus) £165.00



HALFPENNIES (CONTINUED)

462. 1862 Unc with virtually full lustre. £150.00
 463. 1864 Unc traces of lustre £175.00
 464. 1884 BMC 1837. F352 (R5). S3956.
 A/Unc almost full lustre on obverse
 £95.00
465. 1887 BMC 1843. F358 (R4). S3956.
 BU Full Lustre, lightly toning on
 obverse. £120.00
466. 1890 BMC 1846. F362 (R3). S3956.
 Unc good lustre £55.00
467. 1891 BMC 1848. F364 (R3). S3956.
 BU Full Lustre, lightly toning £125.00
468. 1893 BMC 1852. F368 (R4). S3956.
 Unc lustre £55.00
469. 1895 Old Head. BMC 1950. F370 (R2).
 S3962. BU Full Lustre, lightly toning.
 £80.00
470. 1896 Old Head. BMC 1951. F372 1+B.
 S3962 Unc good lustre £45.00
471. 1898 Old Head. BMC 1953. F375. S3962.
 BU Full Lustre, toned on reverse
 £45.00
472. 1899 Old Head. BMC 1954. F376. S3962.
 Unc good lustre £35.00
473. 1899 Old Head. BMC 1954. F376. S3962.
 BU Almost Full Lustre £50.00
474. 1902 BU Almost Full Lustre £35.00
475. 1916 Unc lustre £30.00
476. 1919 BMC 2294. F398. S4056.
 BU Almost Full Lustre (**illus**) £35.00



477. 1920 BMC 2295. F399. S4056.
 BU Full Lustre, very light tone
 (**illustrated**) £50.00



478. 1937 Bronze Proof. BMC 2425. F430 (R7).
 S4115. Virtually FDC, lightly toning
 (**illustrated**) £15.00



479. 1953 S4155. Unc hints of lustre £0.50
 480. 1953 Proof. BMC 2507. F465 (R6). S4155.
 2+A. Cross to bead.
 FDC, lightly toning (**illus**) £18.00



481. 1965 BU Full Lustre £2.00
 482. 1967 S4158. BU Full Lustre £2.00

FARTHINGS

483. 1956 BMC 2527. S4159.
 BU Full Lustre, lightly toning. £4.50
 484. -- BU Full Lustre £5.00
 485. 1955 BMC 2525. S4159.
 BU Full Lustre, lightly toning. £3.00
 486. -- BU Full Lustre £4.00
 487. 1954 BMC 2523. S4159.
 BU Almost Full Lustre £2.00
 488. -- BU Full Lustre, lightly toning. £3.00
 489. -- BU Full Lustre £4.00
 490. 1954 Investment parcel available for this
 date. All coins are BU Full Lustre.
 50 Sparkling Gems.
 (Spink 2024 £6 Unc (each)). £65.00
 491. 1953 (1 + A). BU Full Lustre, lightly toning.
 £3.00
 492. -- -- . BU Full Lustre £3.50
 493. 1953 (2 + B). BMC 2521. S4156.
 BU Almost Full Lustre £0.60
 494. -- -- . BU Full Lustre, lightly toning. £1.00
 495. -- -- . BU Full Lustre £2.00

FARTHINGS (CONTINUED)

496. 1953 (2 + B). Bronze Proof. F664. S4156.
Virtually FDC, toned **(illus)** £10.00



497. 1953 (2 + B). Bronze Proof. F664. S4156.
FDC, light purple toning.
(illustrated) £15.00



498. 1952 BMC 2487. S4119.
BU Full Lustre, lightly toning. £3.00
499. -- BU Full Lustre £4.00
500. 1951 BMC 2485. S4119.
BU Almost Full Lustre £3.00
501. -- BU Full Lustre, lightly toning. £4.00
502. 1950 BMC 2483. S4119.
BU Full Lustre, lightly toning. £5.00
503. -- BU Full Lustre £7.00
504. 1948 BMC 2479. S4116. Unc lustre £2.00
505. -- BMC 2479. S4116.
BU Full Lustre £6.00
506. 1947 BMC 2477. S4116.
BU Almost Full Lustre £2.50
507. -- BU Full Lustre, lightly toning. £3.50
508. 1946 BMC 2475. S4116.
Unc good lustre £1.00
509. -- BU Almost Full Lustre £2.50
510. -- BU Full Lustre, lightly toning. £4.00
511. 1945 BMC 2473. S4116.
BU Almost Full Lustre £2.00
512. -- BU Full Lustre, lightly toning. £3.00
513. -- BU Full Lustre £5.00
514. 1943 BMC 2469. S4116.
BU Full Lustre, lightly toning. £3.00
515. -- BU Full Lustre £5.00
516. 1942 BMC 2467. S4116.
BU Almost Full Lustre £2.00
517. -- BU Full Lustre, lightly toning. £3.00

518. 1942 BU Full Lustre, very lightly toning. £3.50
519. -- BU Full Lustre £5.00
520. 1941 BMC 2465. S4116.
BU Full Lustre, lightly toning £8.00
521. 1939 BMC 2461. S4116.
Unc lustre/Unc good lustre £3.00
522. 1937 Bronze Proof. BMC 2457. F629.
S4116. Virtually FDC, toned
(illustrated) £15.00



523. 1936 Unc lustre £2.00
524. -- BMC 2363. S4061.
Unc lustre/Unc good lustre £2.50
525. -- Unc good lustre £3.00
526. 1932 BMC 2350. S4061. Unc lustre £5.00
527. 1924 BMC 2336. S4060.
Unc good lustre £20.00
528. 1921 BMC 2333. S4060.
BU Almost Full Lustre £25.00
529. 1917 BMC 2329. S4059.
Black Virtually BU £6.50
530. 1917 BMC 2329. S4059. Black BU
(Spink 2024 Cat value BU £14) £10.00
531. 1895 Young Head. Near VF, rare £15.00
532. 1893 Wider Date. BMC 1923. S3958.
EF, good lustre £10.00
533. 1891 NVF/VF £2.50
534. -- VF £2.75
535. 1890 BMC 1917. S3958.
Almost Unc good lustre £30.00
536. 1886 NVF £0.90
537. -- GVF £2.00
538. -- Near EF £2.25
539. -- Unc traces of lustre £9.00
540. -- Unc lustre £10.00
541. -- BMC 1913. S3958.
Almost Unc with good lustre £10.00
542. -- Unc good lustre £15.00
543. -- BMC 1913. S3958.
BU Almost Full Lustre £28.00
544. -- BU Full Lustre, lightly toning £32.00
545. -- BU Full Lustre, lightly toning £32.00

FARTHINGS (CONTINUED)

546.	1884	VF	£1.50
547.	--	A/Unc lustre	£18.00
548.	--	BMC 1909. S3958. Unc traces of lustre	£20.00
549.	1883	Perfect F in FD. BMC 1907. S3958. GEF, traces of lustre	£55.00
550.	1882H	Broken F in FD. BMC --. S3959. Almost Unc with good lustre	£35.00
551.	1881	3 Berries. Obverse 7. Bent nose, open nostril. BMC 1902. S3958. Almost Unc with traces of lustre	£40.00
552.	1879	Normal 9 (same size as other figures). Evenly-spaced date. BMC 1898. S3958. Unc lustre/Almost Unc with hints of lustre	£30.00
553.	1875H	REG type. Near EF	£12.00
554.	1873	Higher set 3 in date. BMC 1886. S3958. Almost Unc/EF, weak strike	£10.00
555.	--	-- . Unc good lustre	£20.00
556.	--	-- . BU Almost Full Lustre	£40.00
557.	--	-- . BU Full Lustre, light toning. (Spink 2024 Cat value UNC £95)	£60.00
558.	1873	Lower set 3 in date. BMC 1886. S3958. Almost Unc with good lustre	£20.00
559.	--	-- . BU Almost Full Lustre	£40.00
560.	1868	BMC 1881. S3958. Unc traces of lustre	£70.00
561.	1863	With raised dot below lighthouse. This variety looks quite deliberate and not accidental. GVF, some marks.	£135.00
562.	1860	Beaded Border. BMC 1854. S3958. BU Almost Full Lustre	£80.00
563.	1860	Beaded Border. BMC 1854. S3958. BU Full Lustre, lightly toning. (illustrated)	£95.00



564.	1860	Mule with TB on the obverse and BB on the reverse. 4 Berries. BMC 1857. S3958. Near VF, ever so lightly buckled and edgy.	£195.00
565.	1853	WW Incuse. BMC 1578. S3950. GVF, rare	£50.00
566.	1853	WW Incuse. BMC 1578. S3950. Near EF, slightly thicker rim, rare	£80.00
567.	1846	From a small hoard of around 80 coins, these 1846 are all Almost Uncirculated and exhibit some original colour but they all have patchy toning. The appearance is of having been in the back of a fire grate or chimney at some time. They were found recently in Plymouth. For a rare date to turn up as a small hoard like this is indeed a rare event. They come in two varieties: a) with a small, neat 4 in the date and b) with a much larger 4, the result of the 4 being re- cut over a higher 4.	£45.00
568.	1844	Victoria. BMC 1565. S3950. EF some toning spots with hints of lustre on reverse. Extremely rare.	£395.00
569.	1841	Near VF	£12.00
570.	1839	2 Prongs to Trident. Fine	£10.00
571.	1835	Reverse B (Normal). GVF	£15.00
572.	1834	Reverse A (Normal). Near EF	£30.00

Second Issue Design (1826-1830)

573.	1830	BMC 1445. S3825. A/Unc toned. (illustrated)	£110.00
------	------	---	---------



574.	1828	Near VF	£10.00
575.	1826	GVF	£10.00

FARTHINGS (CONTINUED)**First Issue Design (1821-1826)**

576. 1821 BMC 1407. S3822.
Choice Unc with lustre on both sides.
£115.00
577. 1821 BMC 1407. S3822.
BU Almost Full Lustre £160.00
578. 1807 Near VF £15.00
579. 1806 BMC 1396 (Curls rendered with
incuse lines). S3782.
Choice Unc traces of lustre £75.00
580. 1806 BMC 1397 (Curls rendered with
raised lines). S3782.
Unc with a hint of lustre £85.00
581. -- -- . S3782. Unc with good lustre on
the obverse and Unc hints of lustre,
bluey tone on the reverse. £125.00
582. 1799 BMC 1279. 3 Berries. S3779.
Unc with traces of lustre.
Encapsulated by NGC MS62 BN
(6769621-003) (**illustrated**) £110.00



583. -- -- . S3779. BU Almost Full Lustre
£150.00

GEORGE III PATTERNS & PROOFS

584. 1799 BMC 1276. Bronzed Proof.
Grained edge. Large raised dot on the
shoulder slightly to the left. Brooch
with 6 irregular jewels: the top one
very indistinct. 8 leaves, well struck
and all attached. Small line flaw
between G of GRATIA and the
forehead, but no flaw attached to
this G. Every feature of BMC 1276
perfectly represented.
Virtually FDC, rare type. £295.00

585. 1754 GF £10.00
586. -- S3722. GVF £45.00
587. -- S3722. GVF £45.00
588. 1719 BMC 815. Obverse legend continuous
over the bust. S3662.
GF, extremely rare £175.00
589. 1717 Currency, the 'Dump' issue.
Reverse B. (Not A/N type). BMC 783.
S3661. GF, very rare
Ex The Staines Collection £295.00
590. 1717 Currency, the 'Dump' issue.
Reverse B. (Not A/N type). BMC 783.
S3661. The olive branch is lower so
that the bottom left leaves are now
lying directly underneath the letter A
and the top left leaf is now close to
the letter A. There is no A/N in
BRITANNIA. Near VF, very rare
£395.00
591. 1694 BMC 616 (Normal).
Double Exergue Line. S3453.
GVF, slight flan crack caused from
striking.
Very rare in this condition. £295.00
592. 1684 Charles II Tin Issue Farthing.
BMC 532. S3395. Edge upright.
NVMMORVM * FAMVLVS * 1684 *
(5 pointed mullets). Reverse inverted.
Good Extremely Fine and As Struck,
blazing full mint lustre on the
obverse.
A superb example and one of the
finest known.
Ex Bridgewater House
Ex Noble 28/11/1973
Ex Colin Cooke Collection, May 2006
Lor 695
Ex Baldwins (ticket enclosed)
(**illustrated**) £4,750.00



BOOKS

613. Freeman M.J.
The Bronze Coinage of Great Britain.
First edition, 1970. London and
Glasgow. pp 154, 258 photographs in
the text, plus 18 additional plates.
With Dust jacket and in excellent
condition. An increasingly scarce
reference work, still in everyday use.
£29.99

ROYAL MINT PROOF SETS

614. 1990 Elizabeth II Silver Proof Five Pence
Two-Coin Set. PSS03. 5p (D3 and D4)
silver proofs (Issued: 35,000).
Struck in sterling (.925) silver to proof
quality. Box and certificate.
FDC £25.00
615. 2007 Red Duluxe UK Annual Proof Coin Set
PS91. £5, £2 x 3, £1, 50p x 2, 20p,
10p, 5p, 2p, 1p. (12 coin set).
Issued: 15,000. FDC £50.00

DECIMAL ODDMENTS

616. £5 2006 Her Majesty Queen Elizabeth II
80th Birthday. L16. (Issued: 330,790)
UK £5 Brilliant Uncirculated Coin in
presentation folder. Cupro-nickel.
£12.00
617. £5 2007 Diamond Wedding Crown.
Her Majesty The Queen.
His Royal Highness Prince Philip. L17.
UK £5 Brilliant Uncirculated Coin in
presentation folder.
(Issued: 260,856). Cupro-nickel.
£12.00
618. £5 2014 Proof Five pounds. (Crown.)
L32. Queen Anne commemorative.
2014 was the 300th anniversary of
the death of the last Stuart monarch,
Queen Anne. Obverse As L22.
Reverse The effigy of Queen Anne
enclosed by baroque decoration
including the Royal Arms from the
reign of Queen Anne and surrounded
by the inscription 'QUEEN ANNE DEI
GRATIA 1665-1714'. FDC £60.00

619. £5 2016 ALDERNEY £5 Poppy.
Remembrance Day. BU £15.00
620. £5 2022 The Platinum Jubilee of Her
Majesty The Queen. L95. 1952 - 2022
UK £5 Brilliant Uncirculated Coin in
folder. Cupro-nickel. £10.00
621. 50p 1969 H1. BU £4.00
622. 50p 1973 Accession to European
Economic Community. Reverse The
inscription '50 PENCE' and the date of
the year, surrounded by nine hands,
symbolizing the nine members of the
community, clasping one another in a
mutual gesture of trust, assistance
and friendship. H2. BU £3.00
623. 50p 1976 H1. GEF £2.00
624. 50p 1980 H1. BU, a couple of minor
bagmarks. £3.00
625. 50p 1984 H3. BU, a couple of bagmarks,
reverse slightly toned. £3.00
626. 10p 1983 F2. BU £4.00
627. 5p 1970 D1. BU £1.00
628. 1/2p 1971 A1. BU £1.00

